

# ErgoOne® FAST: that's how ergonomics meets modernity.



Passionate for science.



# Fast pipetting, maximum precision: ErgoOne® FAST.

## EFFICIENT PIPETTING

During the development of the ErgoOne® FAST pipette controller, a high pipetting speed was recognised as an important feature.

The result is convincing!

The ErgoOne® FAST can fill a 25 ml pipette in less than 4 seconds!

## ERGONOMY MEETS MODERNITY

Every aspect of the ErgoOne® FAST has been developed with ergonomics in mind.

ErgoOne® FAST is one of the lightest pipette controllers on the market. It is designed for comfort and balances perfectly in the hand for long, fatigue-free pipetting.



## ...AND WHAT DOES THE FAST STAND FOR?

### FLEXIBLE

Use with all glass or plastic pipettes from 1.0 ml up to 100 ml.

### ACCURATE

Smooth operation of the aspirating and dispense control buttons provides fast and accurate pipetting.

### SAFE

Optimised sealing system and universal pipette holder provides a safe and leak-free seal for all pipettes.

### TRANSFER

Lightweight and ergonomic. Provides fatigue-free transfer of liquids, even during long periods of use.

 [www.starlab.click/pipettecontroller](http://www.starlab.click/pipettecontroller)

# Little details make a big difference.



## 1 LIGHTWEIGHT FOR MAXIMUM OPERATING COMFORT

ErgoOne® FAST is lightweight and ergonomic. Designed to balance perfectly in the hand during use and provide maximum operating comfort for fatigue-free pipetting.

## 2 PRESSURE-RESPONSIVE SPEED CONTROLS

The aspirating and dispensing speeds are easily regulated by pressure-sensitive control buttons. Unlike other controllers, there is no need to select a separate speed setting, which makes the ErgoOne® FAST very flexible and practical to use.

## 3 BATTERY-LIFE INDICATOR

Uses a traffic light system for easy, visual identification.

The ErgoOne® FAST can be recharged during use so you will never be without your pipette controller.

## 4 SAFE AND SECURE FIT FOR ALL PIPETTES

The ErgoOne® FAST can be used with all glass or plastic pipettes, from 1.0 ml to 100 ml. The autoclavable aspiration cone and silicone pipette holder ensures a secure seal for your liquids while the filter protects your pipette.

## 5 HOURS OF PIPETTING VIA MODERN BATTERY TECHNOLOGY

Completely charged, the battery can perform 2000 x 25 ml dosing cycles. The Lithium-Polymer battery technology guarantees a constant pipetting speed that will not diminish as the battery charge declines.

The battery is also very easy to replace!

 [www.starlab.click/pipettecontroller](http://www.starlab.click/pipettecontroller)

# Perfect fit for your daily applications.

- Transfer of liquid volumes from 1.0 ml to 100 ml
- Serial dispensing of aliquots of different volumes
- Resuspension of bacteria or cell pellets and nucleic acid precipitates
- Aspiration of cell layer from, eg, gradient centrifugation
- Phase extraction and removal of lower phases
- Battery status display uses traffic light system for easy, visual identification.

**Green:** battery fully charged.

**Yellow:** battery half charged.

**Red:** battery almost empty – recharge immediately.



 [www.starlab.click/pipettecontroller](http://www.starlab.click/pipettecontroller)

# Ordering information.

| Description   | Pack Size | Art. No.   |
|---|-----------|------------|
|  ErgoOne® FAST Pipette Controller*       | 1         | S7166-0010 |
| <b>Accessories</b>  |           |            |
|  ErgoOne® FAST Benchtop Support          | 1         | P7166-6306 |
|  Replacement/Additional Wall Mount       | 1         | P7166-6402 |
|  Sticky tape for wall mount              | 1         | P7166-6701 |
|  0.2 µm Membrane Filter, PTFE (Sterile)  | 5         | P7166-6605 |
|  0.45 µm Membrane Filter, PTFE (Sterile) | 5         | P7166-6800 |
|  Replacement Seal for Filter Adapter     | 5         | P7166-6904 |
|  Replacement Pipette Adapter (Silicone) | 1         | P7166-6002 |
|  Replacement Aspiration Cone           | 1         | P7166-6103 |
|  Replacement Lithium Polymer Battery   | 1         | P7166-6501 |
|  Replacement Power Supply              | 1         | P7166-6109 |

\*ErgoOne® FAST is supplied with a battery, a power supply, 0.2 µl filter, 0.45 µl filter, and a wall mount.

| Technical specifications  |   |
|---------------------------|---|
| Battery                   | Lithium Polymer Battery   |
| Charging Time             | ~3 h  |
| Battery Life              | ~2000 x 25 ml dispensing cycles from a fully-charged battery          |
| Permissible Ambient Temp. | 5 °C to 40 °C, (10% to 90% Humidity)                                  |
| Atmospheric Pressure      | 79.5 – 106 kPA  |
| Weight                    | 160 g (with battery)  |
| Materials                 | Housing: Polypropylene Membrane Filter PTFE Pipette Adapter: Silicone |
| Voltage                   | Input: 100 V – 240 V AC±10%<br>Output: 5V                             |
| Frequency                 | 50 Hz – 60 Hz   |



Just one click away:  
order your **ErgoOne® FAST** online.

Starlab's ErgoOne® FAST is a perfect tool for anyone looking for comfortable and fatigue-free pipetting, even during long periods of use.



 [www.starlab.click/pipettecontroller](http://www.starlab.click/pipettecontroller)

# Smooth operator: the StarPet filler.

## WIDE VERSATILITY & COMPATIBILITY

This manual pipette filler has an exceptionally smooth operation. Two dispense modes: one delivers fast filling with optimal accuracy for 10 ml to 25 ml pipettes; the other is for use with 1.0 ml to 10 ml pipettes where accuracy can sometimes be difficult to control. Compatible with Blow-Out, 'To Deliver' (TD) or gravity dispense pipettes

## PRODUCT FEATURES

- Use with all plastic or glass pipettes, 1.0 ml to 25 ml
- Exceptionally smooth operation
- Autoclavable silicone pipette holder

| Description             | Pack Size | Art. No.   |
|-------------------------|-----------|------------|
| StarPet Filler (manual) | 1         | E4866-2000 |
| Silicone Pipette Holder | 1         | E4266-0040 |



# Discover the possibilities with serological pipettes.

## MEASURING AND DISPENSING

The pipettes are constructed from polystyrene for sterile serological and tissue culture applications. Colour-coding on both the pipettes and the packaging provides easy volume identification. The black printed, easy-to-read ascending and descending graduations simplify fluid measuring and dispensing, and all pipettes (excl. 100 ml) feature negative graduations for extra working volume. Perfect for use with all popular pipette controllers, including ErgoOne® FAST and StarPet Filler.

## PRODUCT FEATURES

- Accuracy  $\pm 2\%$
- Bidirectional graduations provide added applicability
- Non-cytotoxic and non-haemolytic USP Class VI polystyrene
- Individually wrapped in traceable paper-plastic peel-back packs showing lot number and expiry date
- Gamma sterilized to SAL  $10^{-6}$  (ISO11137)
- Certified RNase, DNase and pyrogen free
- Manufactured in ISO 9001 and ISO 13485 certified environment



| Description  | Pack Size | Art. No.   |
|--|-----------|------------|
| 1.0 ml Serological Pipette, Ind. Wrapped (sterile) | 500       | E4860-0001 |
| 2.0 ml Serological Pipette, Ind. Wrapped (sterile) | 500       | E4860-0002 |
| 5.0 ml Serological Pipette, Ind. Wrapped (sterile) | 200       | E4860-0005 |
| 10 ml Serological Pipette, Ind. Wrapped (sterile)  | 200       | E4860-0010 |
| 25 ml Serological Pipette, Ind. Wrapped (sterile)  | 150       | E4860-0025 |
| 50 ml Serological Pipette, Ind. Wrapped (sterile)  | 100       | E4860-0050 |
| 100 ml Serological Pipette, Ind. Wrapped (sterile) | 50        | E4860-1100 |

 [www.startlab.click/serologicalpipettes](http://www.startlab.click/serologicalpipettes)

# Safe and efficient aspiration of fluids: **Starlab Aspirator.**

## USE TWO HAND CONTROLLERS WITHOUT ANY LOSS OF PERFORMANCE

The Starlab Aspirator is designed for the safe and efficient aspiration of fluids. The vacuum level and suction power is adjustable in eight steps, ranging from 150 to 850 mbar for safe and reproducible working. The chemically-resistant pump automatically switches on/off to reduce noise level in the workplace.

The ergonomically-designed hand controller is fully autoclavable. Collection containers are available in two options; 4 l polypropylene and 2 l glass bottles. The Aspirator can also be used as a mobile vacuum source for sterile filtration and solid phase extraction.

## PRODUCT FEATURES

- The powerful pump can operate two hand controllers without any loss of performance
- Chemically-resistant, high performance pump with long service life
- Ergonomic, fully autoclavable hand controller
- Auto ON-OFF pump switch with low noise emission for a quieter working environment
- Intuitive, reproducible adjustment of suction power via touch panel



### Easy to handle

Pressing the lever allows fine adjustment of suction power. Permanent suction can also be enabled.



### 8-channel tip adapter

The 8-channel adapter for 200 µl and 300 µl pipette tips is the perfect choice for working with cell culture plates.



| Description                                | Pack Size | Art. No.   |
|--|-----------|------------|
| Aspirator incl. 4l bottle & handcontroller | 1         | N2400-9000 |

N2400-9000 is supplied with 4l PP bottle, handcontroller, adapters for pipettes and pipette tips (200, 300 and 1000 µl) and a wall mount for handcontroller.





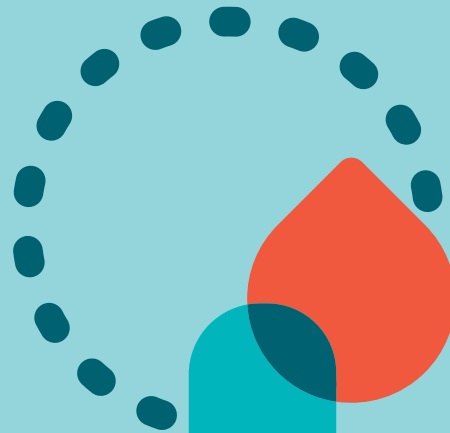
### Hydrophobic Filter

Hydrophobic filter prevents contamination of environment and provides overflow protection.



### Quick coupling




Autoclavable, self-sealing quick couplings allow safe decontamination of biological risks.



### Technical specifications

|  |                        |
|--|------------------------|
| Max. pumping speed                     | 16.7 l/min             |
| Adjustable range of vacuum             | 150 - 850 mbar         |
| Max. permissible inlet/outlet pressure | 1.1 bar                |
| Noise level                            | 45 db(A)               |
| Power supply                           | 230 V + 10 %, 50/60 Hz |
| Max. power consumption                 | 40 W                   |
| Permissible ambient temperature        | 10 to 40 °C            |
| Permissible relative humidity          | 30 - 85 %              |
| Dimensions (W x D x H)                 | 408 x 194 x 500 mm     |
| Weight                                 | 7.3 kg                 |

### WANT TO SET UP A SECOND HAND CONTROLLER ON YOUR ASPIRATOR?

| Description  | Pack Size | Art. No.   |
|--|-----------|------------|
|  Hand controller for Aspirator <sup>1)</sup>             | 1         | N2400-9001 |
|  Connection Kit for 2nd hand controller                 | 1         | N2400-9006 |
|  Quick coupling hand controller to bottle <sup>2)</sup> | 1         | N2400-9008 |

<sup>1)</sup> Includes one adapter for pipettes, one adapter for pipette tips, a wall mount and 2.5m of tubing.

<sup>2)</sup> Recommended but not necessary.

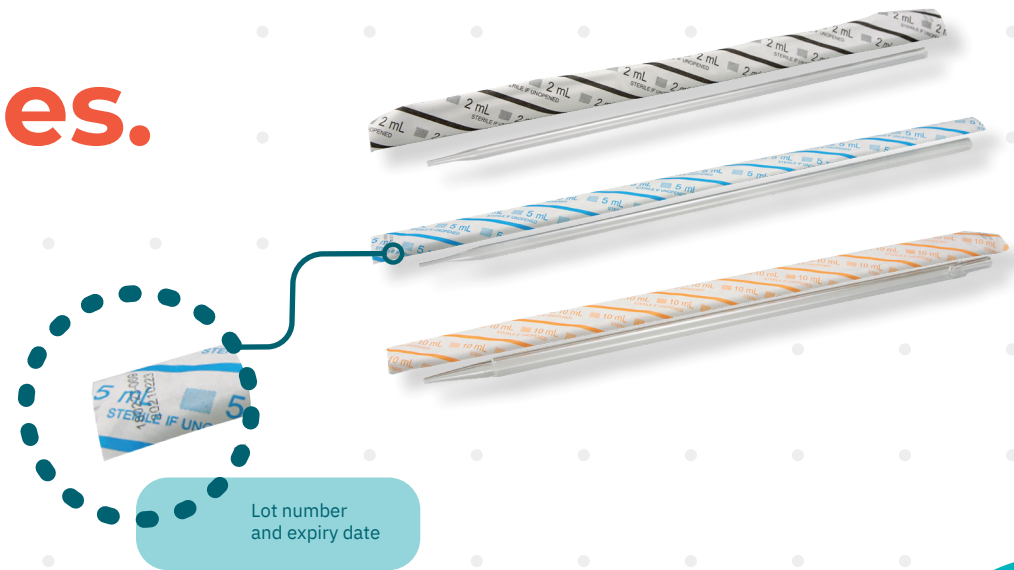
### FULL RANGE OF ACCESORIES AVAILABLE ONLINE!

 [www.starlab.click/aspirator](http://www.starlab.click/aspirator)

# Aspirate liquids with aspiration pipettes.

## INDIVIDUALLY WRAPPED AND STERILE

Sterile, polystyrene pipettes without a filter or graduation marks. Aspiration pipettes are used for vacuum aspirating procedures or transfer of fluids where volume accuracy is not a requirement.



## PRODUCT FEATURES

- Individually wrapped in traceable paper-plastic peel-back packs showing lot number and expiry date
- Gamma sterilized to SAL  $10^{-6}$  (ISO11137)
- Certified RNase, DNase and pyrogen free
- Non-cytotoxic and non-haemolytic, latex-free  
USP Class VI polystyrene
- ISO 9001 and ISO 13485 manufactured

| Description                                       | Pack Size | Art. No.   |
|---|-----------|------------|
| 2.0 ml Aspiration Pipette, Ind. Wrapped (sterile) | 500       | E4861-0002 |
| 5.0 ml Aspiration Pipette, Ind. Wrapped (sterile) | 200       | E4861-0005 |
| 10 ml Aspiration Pipette, Ind. Wrapped (sterile)  | 200       | E4861-0010 |

[www.starlab.click/aspirationpipettes](http://www.starlab.click/aspirationpipettes)

# Bottle Top Filtration Units.

## OPEN WIDE FOR EFFICIENCY & THE ENVIRONMENT!

Starlab's Bottle Top Filtration units have a wide base for stability and a wide, easily accessible bottle top for fast and efficient use.

The reservoir bottle caps are easy to loosen and tighten and the clever hose connector is designed to fit multiple hose diameters.

Robust and compact, Starlab's new filtration units save on valuable space and plastic waste with minimal vacuum packaging to ensure cleanliness. Each unit is manufactured in a Class 100,000 clean room environment and printed with the batch number for easy traceability as well as the expiry date



Image shows caps for securing the lower bottles when full, placed on top of each unit.

| Bottle Volume | Pack Size | Art. No. 0.22 µm | Art. No. 0.45 µm |
|---------------|-----------|------------------|------------------|
| 150 ml        | 12        | CC8221-3226      | CC8221-3456      |
| 250 ml        | 12        | CC8221-4226      | CC8221-4456      |
| 500 ml        | 12        | CC8221-5226      | CC8221-5456      |
| 1000 ml       | 12        | CC8221-6226      | CC8221-6456      |

[www.starlab.click/filtration](http://www.starlab.click/filtration)



**Starlab International GmbH**

Neuer Höltigbaum 38  
22143 Hamburg  
Germany

T: +49 (0)40 675 99 39 0  
F: +49 (0)40 675 99 39 20  
info@starlab.de  
www.starlabgroup.com

**Starlab GmbH**

Neuer Höltigbaum 38  
22143 Hamburg  
Germany

T: +49 (0)40 675 99 39 0  
F: +49 (0)40 675 99 39 20  
info@starlab.de  
www.starlab.de

**Starlab (UK), Ltd**

5 Tanners Drive  
Milton Keynes MK14 5BU  
United Kingdom

T: +44 (0)1908 283800  
F: +44 (0)1908 283802  
infoline@starlab.co.uk  
www.starlab.co.uk

**Starlab FRANCE SARL**

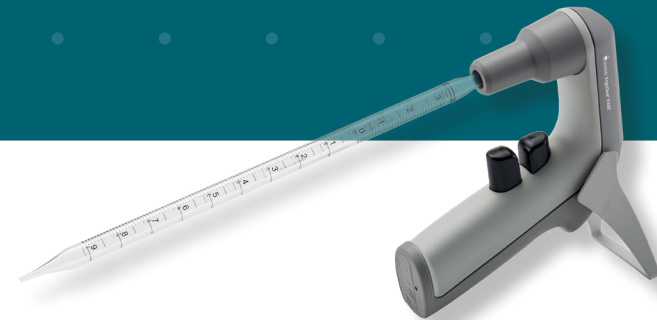
30 Rue Jean Rostand  
91400 Orsay  
France

T: +33 (0)1 60 13 71 70  
F: +33 (0)1 69 41 48 65  
info@starlab.fr  
www.starlab.fr

**Starlab S.r.l.**

Via Pinturicchio 1  
20133 Milano  
Italy

T: +39 (0)2 7020 1040  
F: +39 (0)2 7020 1033  
info@starlab.it  
www.starlab.it

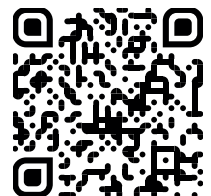


**FLEXIBLE. ACCURATE. SAFE. TRANSFER.**

The ErgoOne® FAST is an essential bit of kit for any lab. As one of the lightest pipette controllers on the market, it offers comfortable and fatigue-free pipetting even during long periods. The ErgoOne® FAST provides you with fast, accurate and safe liquid transfer to help speed up your laboratory tasks.

Find out more about the ergonomics of the ErgoOne® FAST on our website.

Scan QR code for more  
information & ordering



[www.starlab.click/pipettecontroller](http://www.starlab.click/pipettecontroller)