

Your tools for being a great scientist: the ErgoOne[®] pipette family.



Passionate for science.



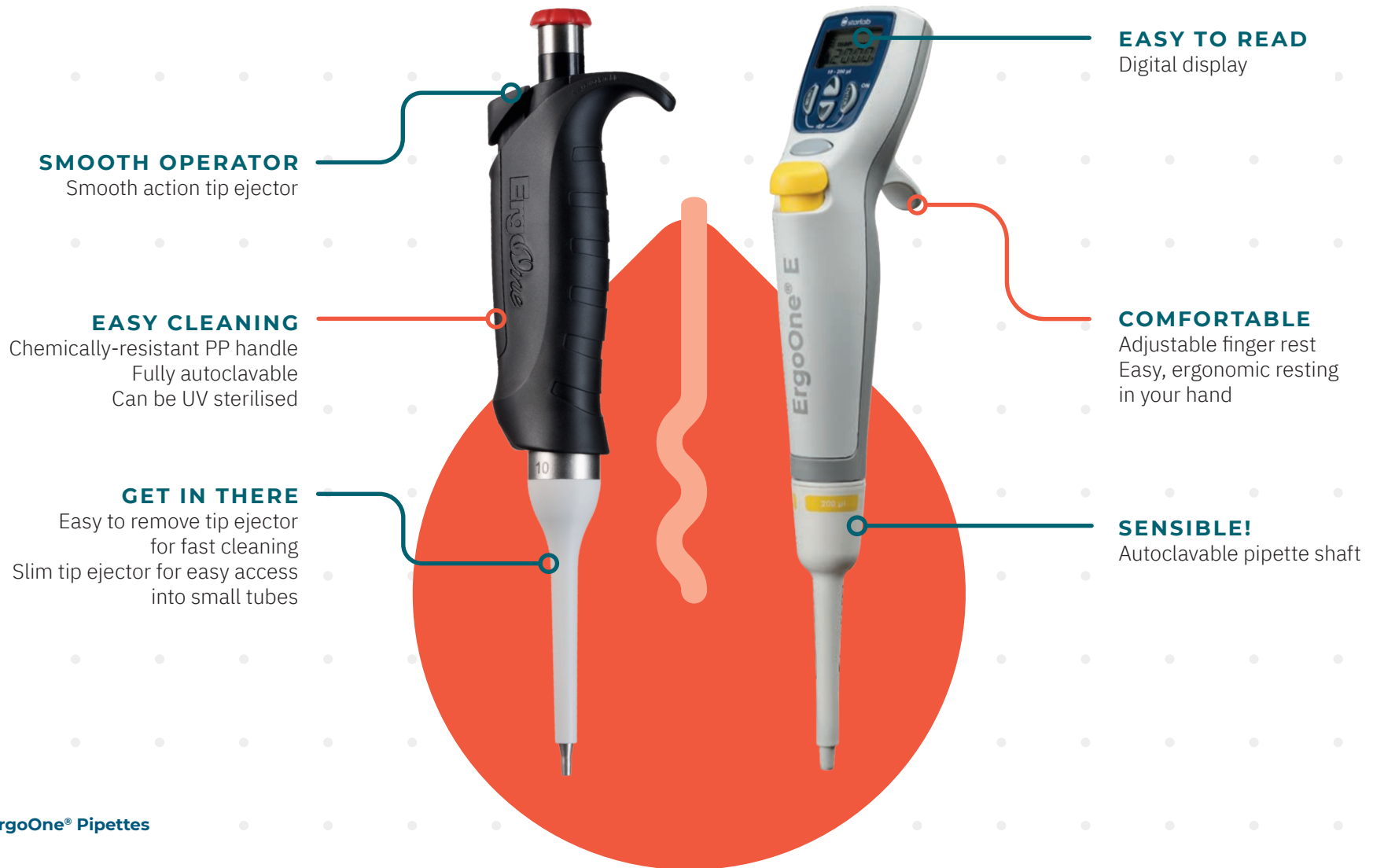
- **Product overview.**

- For the nerds: tech specs.

Product overview.



Manual or electronic, your choice.



ErgoOne[®] pipettes.

CLEVER

Colour coding that matches the colour coding of TipOne[®] Tips

SMOOTH OPERATOR

Smooth action tip ejector

SEE WHAT YOU DO

4-digit volume display for greater accuracy. The volume display is positioned so it's visible during pipetting to both right and left-handed users



LOCK IT OR LOSE IT

Volume lock prevents drift during use

COMFORTABLE

Ergonomically designed finger rest
Contoured handle
Lightweight

EASY CLEANING

Chemically-resistant PP handle
Fully autoclavable
Can be UV sterilised

GET IN THERE

Easy to remove tip ejector for fast cleaning
Slim tip ejector for easy access into small tubes

SENSIBLE

Integral, rust-free tip ejector

UNIVERSAL TIP FIT

ErgoOne® pipettes.

COMFORT AND STYLE: YOU CAN HAVE BOTH!

Reliability is key in the laboratory and your pipette must be trusted to perform well – day in, day out. ErgoOne® pipettes have it all – the accuracy and precision you need, and a stylish look you will love.

As one of the most frequently used instruments in the lab, pipettes need to be comfortable to use but must also provide the features you need. ErgoOne® pipettes are designed with both the researcher's needs and the latest ergonomic principles in mind.

Lightweight and easy to use, ErgoOne® can be trusted to provide accurate and precise pipetting all day, every day. Use with STARLAB's TipOne® pipette tips for the perfect pipetting partnership.

ErgoOne® is engineered to be compatible with all popular pipette tips, without any loss of accuracy or precision.

ErgoOne® pipettes are sold with a 3-year warranty.

CONVENIENT
Easy to remove lower part for cleaning



TOUGH
Wear-resistant polymer tip holders

THOUGHTFUL
Cascaded tip ejector lowers the tip ejection force

ERGOONE® FEATURES

- Minimal operating forces
- Lightweight ergonomic design
- Colour coded
- Volume lock
- Universal tip fit



www.starlab.click/manualpipettes

ErgoOne® E pipettes.



EASY TO READ DIGITAL DISPLAY

Large, digital volume display and easy to master, intuitive menu structure makes the ErgoOne® E the researcher's choice for easy, everyday pipetting.



CAN BE RECHARGED DURING USE

You will never be without the use of your pipette – the ErgoOne® E can be recharged during use!

LONG LASTING BATTERY

~4000 pipetting cycles on one charge! Auto shut-off after 10 minutes of inactivity helps save battery charge.

ADJUSTABLE

Ergonomically designed finger rest

COMFORTABLE

Ergonomic hand grip

AUTOCLAVABLE PIPETTE SHAFT

Unscrew shaft for quick autoclaving

ERGONOMIC

Significantly reduced tip loading forces

UNIVERSAL TIP FIT

ErgoOne® E pipettes.

RELIABLE & ERGONOMIC

ErgoOne® E single and multi-channel pipettes provide reliable pipetting every day. These micro-processor controlled, battery-operated, piston-stroke members of the ErgoOne® family have been optimised for ergonomic operation and ease of use. The adjustable finger rest and the significantly reduced tip loading and ejection forces makes ErgoOne® E the perfect companion for comfortable pipetting during long periods of use. ErgoOne® E is compatible with TipOne® tips but the optimized design of the tip cone provides the user with a convenient universal tip fit.

FIVE OPERATING MODES

- 1. Pipetting:** A previously set volume is aspirated into the pipette tip and then discharged.
- 2. Reverse Pipetting:** Program especially for pipetting liquids with a high viscosity or vapor pressure or those that tend to foam.
- 3. Mixing:** The sample is repeatedly aspirated and discharged.
- 4. Multi Dispense:** An aspirated volume is dispensed repeatedly in defined steps.
- 5. Electrophoresis*:** A predefined sample volume is aspirated at high, adjustable speed and then slowly discharged.

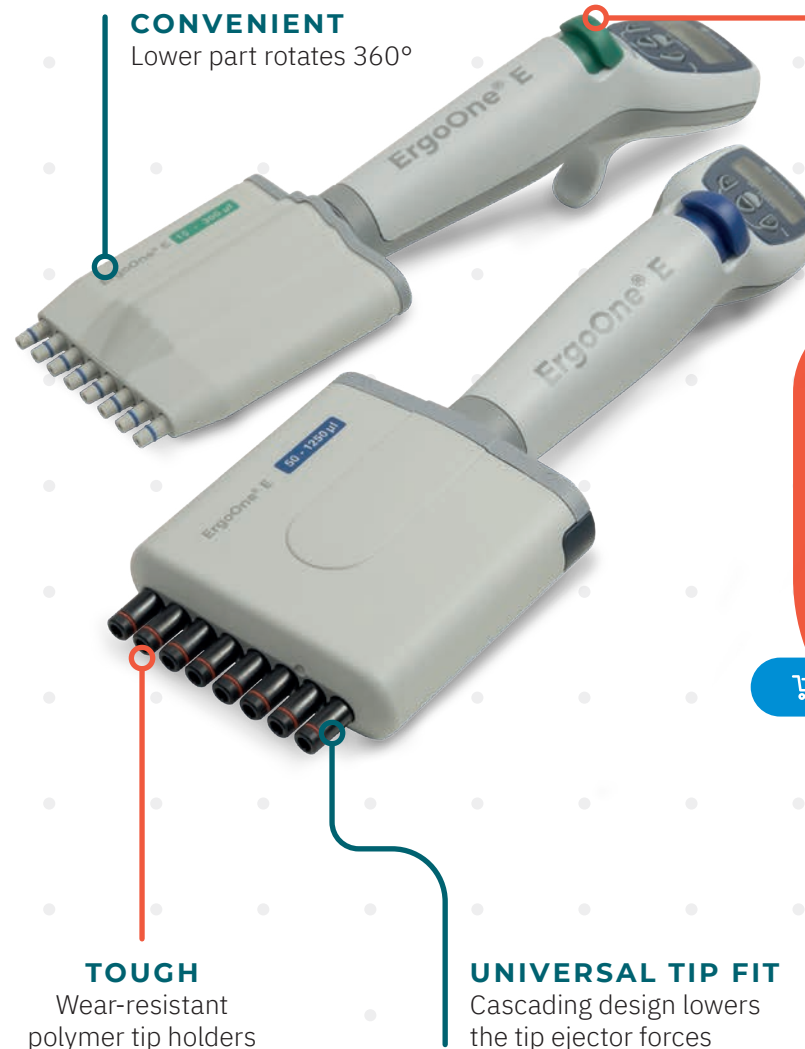
* GEL mode is not available for ErgoOne® E 1000 µl and 5000 µl. Compare to the ErgoOne® E brochure.

CONVENIENT

Lower part rotates 360°

EASY

Colour code for easy volume identification



TOUGH

Wear-resistant polymer tip holders

UNIVERSAL TIP FIT

Cascading design lowers the tip ejector forces

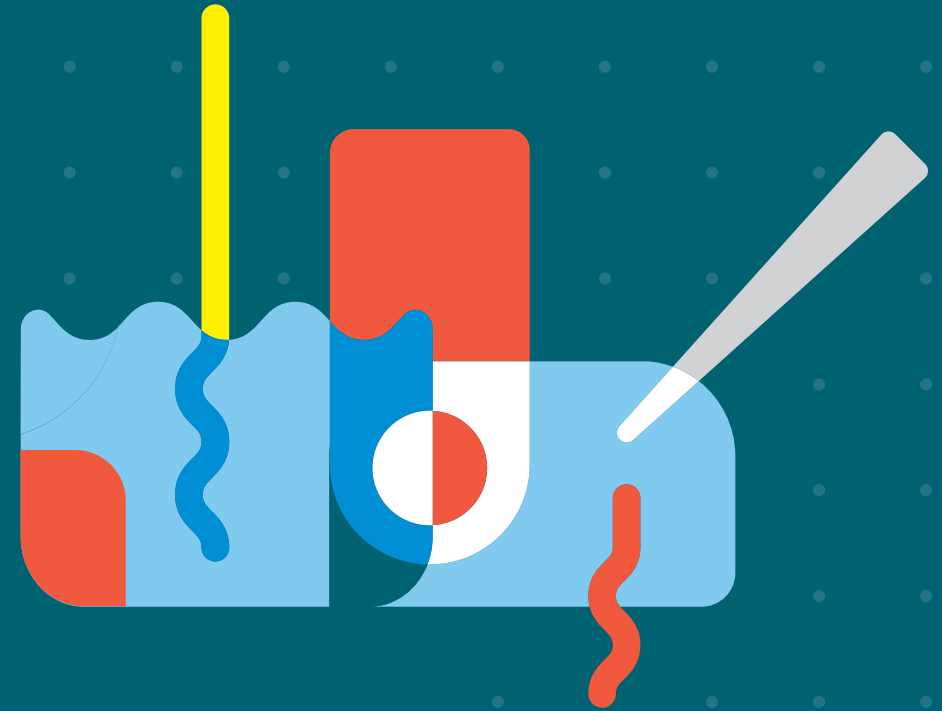
ERGOONE® E FEATURES

- Reliable
- Lightweight, ergonomic design
- Adjustable finger rest
- Significantly reduced tip loading and ejection forces
- Universal tip fit



www.starlab.click/electronicpipettes

- Product overview.
- **For the nerds: tech specs.**

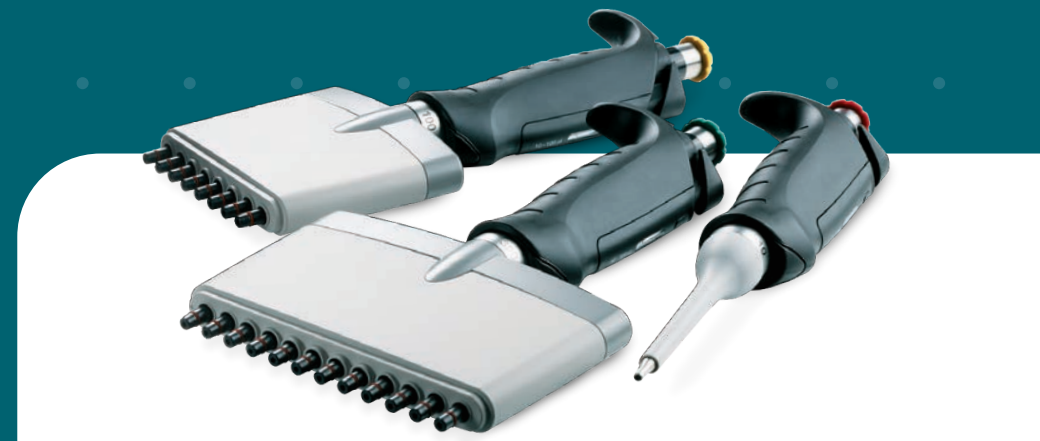


For the nerds: the tech specs.

Technical data & ordering information.

Volume Range (Colour Coding)	Increments	Volume (μ l)	Systematic Error (Inaccuracy) $\pm\%$		Random Error (Imprecision) $\pm\%$		Cat. No.
			8655-2	ErgoOne®	8655-2	ErgoOne®	
SINGLE-CHANNEL							
0.1 – 2.5 μ l (Red)	0.002 μ l	0.1	125	24	75	12	S7100-0125
		0.25	50	12	30	6.0	
		1.25	10	2.5	6.0	1.5	
0.5 – 10 μ l (Red)	0.01 μ l	2.5	5.0	1.4	3.0	0.7	S7100-0510
		1.0	12	2.5	8.0	1.8	
		5	2.4	1.5	1.6	0.8	
2.0 – 20 μ l Micro cone (Red)	0.02 μ l	10	1.2	1.0	0.8	0.4	S7100-0221
		2	10	5.0	5.0	1.5	
		10	2.0	1.2	1.0	0.6	
2.0 – 20 μ l Standard cone (Yellow)	0.02 μ l	20	1.0	1.0	0.5	0.3	S7100-0220
		2	10	5.0	5.0	1.5	
		10	2.0	1.2	1.0	0.6	
10 – 100 μ l (Yellow)	0.1 μ l	20	1.0	1.0	0.5	0.3	S7100-1100
		10	8.0	3.0	3.0	1.0	
		50	1.6	1.0	0.6	0.3	
20 – 200 μ l (Yellow)	0.2 μ l	100	0.8	0.8	0.3	0.2	S7100-2200
		20	8.0	2.5	3.0	0.7	
		100	1.6	1.0	0.6	0.3	
100 – 1000 μ l (Blue)	1 μ l	200	0.8	0.6	0.3	0.2	S7110-1000
		100	8.0	3.0	3.0	0.6	
		500	1.6	1.0	0.6	0.2	
500 – 5000 μ l (Violet)	5 μ l	1000	0.8	0.6	0.3	0.2	S7150-5000
		500	8.0	2.4	3.0	0.6	
		2500	1.6	1.2	0.6	0.25	
		5000	0.8	0.6	0.3	0.15	
8-CHANNEL PIPETTES							
0.5 – 10 μ l (Red)	0.01 μ l	1.0	24	8.0	16	5.0	S7108-0510
		5.0	4.8	4.0	3.2	2.0	
		10	2.4	2.0	1.6	1.0	
10 – 100 μ l (Yellow)	0.1 μ l	10	16	3.0	6.0	2.0	S7108-1100
		50	3.2	1.0	1.2	0.8	
		100	1.6	0.8	0.6	0.3	
30 – 300 μ l (Green)	0.2 μ l	30	26.7	3.0	10	1.0	S7108-3300
		150	5.3	1.0	2.0	0.5	
		300	2.7	0.6	1.0	0.3	
12-CHANNEL PIPETTES							
0.5 – 10 μ l (Red)	0.01 μ l	1.0	24	8.0	16	5.0	S7112-0510
		5.0	4.8	4.0	3.2	2.0	
		10	2.4	2.0	1.6	1.0	
10 – 100 μ l (Yellow)	0.1 μ l	10	16	3.0	6.0	2.0	S7112-1100
		50	3.2	1.0	1.2	0.8	
		100	1.6	0.8	0.6	0.3	
30 – 300 μ l (Green)	0.2 μ l	30	26.7	3.0	10	1.0	S7112-3300
		150	5.3	1.0	2.0	0.5	
		300	2.7	0.6	1.0	0.3	

Tested in accordance with EN ISO 8655, using Starlab's TipOne® tips. 3-year warranty.



Just one click away: order your **ErgoOne®** pipette online.

ErgoOne® single and multi-channel pipettes provide reliable pipetting every day. Ergonomic and lightweight, ErgoOne® pipettes are perfect for comfortable pipetting during long periods of use.



www.starlab.click/manualpipettes



Technical data & ordering information.

Volume Range	Increments	Systematic Error (Inaccuracy) ±%	Random Error (Imprecision) ±%	Cat. No.
SINGLE-CHANNEL PIPETTES				
0,5 – 10 µl (red)	0.01 µl	5.0 / 1.5 / 1.0	2.0 / 0.8 / 0.4	G9001-0010
2,0 – 20 µl (red)	0.02 µl	5.0 / 1.5 / 1.0	2.5 / 0.8 / 0.4	G9001-0020
10 – 200 µl (yellow)	0.2 µl	4.0 / 1.2 / 0.8	0.6 / 0.3 / 0.2	G9001-0200
50 – 1000 µl (blue) 1	.0 µl	3.0 / 1.0 /	0.6 0.6 / 0.3 / 0.2	G9001-1000
250 µl – 5 ml (violet)	5.0 µl	3.0 / 1.0 /	0.6 0.6 / 0.3 / 0.2	G9001-5000
8-CHANNEL PIPETTES				
0.5 – 10 µl (red)	0.01 µl	8.0 / 2.0 / 1.2	4.0 to 0.8	G9008-0010
1.0 – 20 µl (red)	0.02 µl	8.0 / 2.0 / 1.0	3.0 to 0.5	G9008-0020
5.0 – 100 µl (yellow)	0.1 µl	4.0 / 1.6 / 0.8	1.5 to 0.25	G9008-0100
15 – 300 µl (green)	0.5 µl	3.0 / 1.2 / 0.6	1.2 to 0.25	G9008-0300
12-CHANNEL PIPETTES				
0.5 – 10 µl (red)	0.01 µl	8.0 / 2.0 / 1.2	4.0 to 0.8	G9012-0010
1.0 – 20 µl (red)	0.02 µl	8.0 / 2.0 / 1.0	3.0 to 0.5	G9012-0020
5.0 – 100 µl (yellow)	0.1 µl	4.0 / 1.6 / 0.8	1.5 to 0.25	G9012-0100
15 – 300 µl (green)	0.5 µl	3.0 / 1.2 / 0.6	1.2 to 0.25	G9012-0300

Single-channels supplied with battery, AC Adapter and silicone oil. Multi-channels supplied with battery, AC Adapter, individual stand, a rack of TipOne® tips and silicone oil. Final test values related to nominal value which is printed on the device (ie, max. volume) and the indicated volume steps, according to DIN EN ISO 8655. 1-year warranty.



Just one click away: order your ErgoOne® E pipette online.

ErgoOne® E pipettes provide reliable pipetting every day. These microprocessor controlled, battery-operated, piston-stroke pipettes, have been optimised for ergonomic operation and ease of use.



www.starlab.click/electronicpipettes

The perfect companions.

ErgoOne® MANUAL PIPETTES



2.5 µl 10 µl 20 µl (micro) 20 µl (standard) 100 µl 200 µl 1000 µl 5000 µl

ErgoOne® Accessories

DESCRIPTION

CAT. NO.



ErgoOne® Universal Carousel Stand for up to 8 pipettes (UV Resistant)
For use with: ErgoOne®, Biohit®, Finn®, Gilson®, Rainin® single or multi-channel pipettes

S7200-0000



ErgoOne® Wall Mount
For use with: ErgoOne® single or multi-channel pipettes

S7200-0001



ErgoOne® Bench Support for 1 pipette
For use with: ErgoOne® single-channel pipettes (Pack of 5)

E3099-0002



Universal Acrylic Pipette Stand for up to 5 pipettes (UV Resistant)
For use with: ErgoOne®, Biohit®, Finn®, Eppendorf®, Gilson®, Rainin® single or multi-channel pipettes

E3099-0000



ErgoOne® Self-Adhesive Shelf Holder for 1 pipette (UV Resistant)
For use with: ErgoOne® single or multi-channel pipettes

E3099-0001

Pipettes are not included. Images for illustrative purposes only.

ErgoOne® E Electronic PIPETTES



ErgoOne® E Accessories

DESCRIPTION

PACK SIZE

CAT. NO.



Individual Stand (for Single-Channel Pipettes, 10 µl to 1000 µl)

1

G9999-1002



Individual Stand (for 5000 µl Single-Channel Pipette)

1

G9999-1003



Individual Stand (for all Multi-Channel Pipettes)

1

G9999-1004



Charging Stand with AC Adapter for Europe/UK (230V/50 Hz) for 3 Single-Channel Pipettes up to 1000 µl

1

G9999-1001



AC Adapter for Europe/UK (230V/50 Hz)

1

G9999-1000



Replacement Battery

1

G9999-1005



Silicone Oil for Piston (for Single-Channel Pipettes, 10 µl to 1000 µl)

1

G9999-1006



Silicone Oil for Piston (for 5000 µl Single-Channel Pipette and all Multi-Channels)

1

G9999-1007



Fluorstatic Grease for Guiding Axis (for Multi-Channel Pipettes)

1

G9999-1008

Pipettes are not included. Images for illustrative purposes only.



Starlab International GmbH

Neuer Höltigbaum 38
22143 Hamburg
Germany

T: +49 (0)40 675 99 39 0
F: +49 (0)40 675 99 39 20
info@starlab.de
www.starlabgroup.com

Starlab (UK), Ltd

5 Tanners Drive
Milton Keynes MK14 5BU
United Kingdom

T: +44 (0)1908 283800
F: +44 (0)1908 283802
infoline@starlab.co.uk
www.starlab.co.uk

Starlab GmbH

Neuer Höltigbaum 38
22143 Hamburg
Germany

T: +49 (0)40 675 99 39 0
F: +49 (0)40 675 99 39 20
info@starlab.de
www.starlab.de

Starlab FRANCE SARL

30 Rue Jean Rostand
91400 Orsay
France

T: +33 (0)1 60 13 71 70
F: +33 (0)1 69 41 48 65
info@starlab.fr
www.starlab.fr

Starlab S.r.l.

Via Pinturicchio 1
20133 Milano
Italy

T: +39 (0)2 7020 1040
F: +39 (0)2 7020 1033
info@starlab.it
www.starlab.it



**Just one click away:
order your ErgoOne® pipette online.**

The ErgoOne® family comprises a range of pipettes that provide the accuracy and precision you need and ergonomic design principles you will love. Manual or electronic, you choose! Our family of ErgoOne® pipettes with convenient, universal tip fit will provide you with the perfect pipette for your needs, whatever the application.

Scan QR code for more
information & ordering



www.starlab.click/pipettes