

Chemgene MEDLAB.

MICROBIOLOGICAL EFFICACY

Chemgene MEDLAB has been tested to the following European PT2 test standards.

Medical

- EN13727 & EN17387 (bactericidal)
- EN13624 & EN17387 (yeasticidal, fungicidal)
- EN16777 (virucidal – all enveloped viruses)
- EN16777 (Adenovirus, Norovirus)
- EN16615 (disinfectant wipe test)

Domestic

- EN14476 (virucidal – all enveloped viruses)
- EN14476 (Adenovirus, Norovirus)

Other

- EN13623 (Legionella)
- EN13610 (Bacteriophage)

DILUTION CHART

Effective against	Dilution	Contact time
Bactericidal. Incl. ESKAPE organisms, Moraxella, Streptococcus pyrogenes, E.coli	1 %	5 mins
Bactericidal. Legionella	1 %	10 mins
Bacteriophages	1 %	5 mins
Yeasticidal. Incl. Candida alicans, Candida auris	1 %	10 mins
Virucidal (enveloped viruses). Incl. Vaccinia virus, HIV, Hepatitis B & C, Herpes Simplex, Coronavirus	1 %	10 mins
Fungicidal. Incl. Aspergillus brasiliensis	5 %	10 mins
Virucidal (non-enveloped viruses). Adenovirus	10 %	5 mins
Norovirus	10 %	30 mins



YEASTICIDAL/FUNGICIDAL EFFICACY

Test organisms	Test ref	Formula	Test conditions	Test result
Aspergillus brasiliensis	EN13624	Conc 5%	10 mins / low soil / 20 °C	>4 log reduction
		RTU	5 mins / high soil / 20 °C	
		Wipes	30 mins / low soil / 20 °C	
	EN17387	Conc 5%	10 mins / low soil / 20 °C	
		RTU	10 mins / low soil / 20 °C	
		RTU	30 mins / high soil / 20 °C	
Candida albicans	EN13624	Conc 1%	5 mins / high soil / 20 °C	>4 log reduction
		RTU	1 min / high soil / 20 °C	
		Wipes	1 min / low soil / 20 °C	
	EN17387	Conc 1%	10 mins / low soil / 20 °C	
		Conc 2%	5 mins / high soil / 20 °C	
		RTU	2 mins / high soil / 20 °C	
EN16615	RTU	5 mins / low soil / 20 °C	>4 log reduction ¹⁾	
	Wipes	1 min / low soil / 20 °C		
Candida auris	EN13624	Conc 2%	5 mins / low soil / 20 °C	>4 log reduction
		RTU	1 min / high soil / 20 °C	
		Wipes	1 min / low soil / 20 °C	
	EN17387	Conc 1%	10 mins / low soil / 20 °C	
		Conc 2%	5 mins / low soil / 20 °C	
		RTU	2 mins / high soil / 20 °C	

MICROBIOLOGICAL EFFICACY

BACTERICIDAL EFFICACY

Test organisms	Test ref	Formula	Test conditions	Test result	
Acinetobacter baumannii	EN13727	Conc 1%	5 mins / low soil / 20 °C	>5 log reduction	
		RTU	1 min / high soil / 20 °C		
		Wipes	1 min / low soil / 20 °C		
	EN17387	Conc 1%	5 mins / low soil / 20 °C	>5 log reduction	
		RTU	1 min / high soil / 20 °C		
	Enterobacter cloacae	EN13727	Conc 1%	5 mins / low soil / 20 °C	>5 log reduction
RTU			1 min / high soil / 20 °C		
Wipes			1 min / low soil / 20 °C		
EN17387		Conc 1%	5 mins / low soil / 20 °C	>5 log reduction	
		RTU	1 min / high soil / 20 °C		
Enterococcus faecium		EN13727	Conc 1%	5 mins / low soil / 20 °C	>5 log reduction
	RTU		1 min / high soil / 20 °C		
	EN17387	Conc 1%	5 mins / low soil / 20 °C	>5 log reduction	
		RTU	1 min / high soil / 20 °C		
	Enterococcus hirae	EN13727	Conc 1%	5 mins / high soil / 20 °C	>5 log reduction
			RTU	1 min / high soil / 20 °C	
Wipes			1 min / low soil / 20 °C		
EN17387		Conc 1%	5 mins / low soil / 20 °C	>5 log reduction	
		Conc 2%	5 mins / high soil / 20 °C		
EN16615		RTU	1 min / high soil / 20 °C	>5 log reduction ¹⁾	
	Wipes	1 min / low soil / 20 °C			
Escherichia coli	EN13727	Conc 1%	5 mins / high soil / 20 °C	>5 log reduction	
		RTU	1 min / high soil / 20 °C		
		Wipes	1 min / low soil / 20 °C		
	EN17387	Conc 1%	5 mins / low soil / 20 °C	>5 log reduction	
		RTU	1 min / high soil / 20 °C		
	Klebsiella pneumoniae	EN13727	Conc 1%	5 mins / low soil / 20 °C	>5 log reduction
RTU			1 min / high soil / 20 °C		
Wipes			1 min / low soil / 20 °C		
EN17387		Conc 1%	5 mins / low soil / 20 °C	>5 log reduction	
		RTU	1 min / high soil / 20 °C		

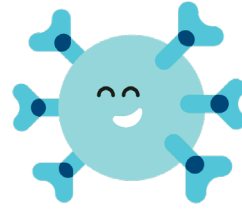
¹⁾ Modified Stainless Steel

BACTERICIDAL EFFICACY

Test organisms	Test ref	Formula	Test conditions	Test result
Legionella pneumophila	EN13623	Conc 1%	10 mins / low soil / 20 °C	>4 log reduction
		Conc 2%	5 mins / low soil / 20 °C	
		RTU & Wipes	1 min / 0.0005% yeast extract / 20 °C	
Methicillin-resistant Staphylococcus aureus (MRSA)	EN13727	Conc 1%	5 mins / low soil / 20 °C	>5 log reduction
		RTU	1 min / high soil / 20 °C	
	EN17387	Conc 1%	5 mins / low soil / 20 °C	>5 log reduction
		RTU	1 min / high soil / 20 °C	
Moraxella catarrhalis	EN13727	Conc 1%	5 mins / low soil / 20 °C	>5 log reduction
		RTU	1 min / high soil / 20 °C	
		Wipes	1 min / low soil / 20 °C	
	EN17387	Conc 1%	5 mins / low soil / 20 °C	>5 log reduction
		RTU	1 min / high soil / 20 °C	
		Wipes	1 min / low soil / 20 °C	
Pseudomonas aeruginosa	EN13727	Conc 1%	5 mins / low soil / 20 °C	>5 log reduction
		Conc 2%	5 mins / high soil / 20 °C	
		RTU	1 min / high soil / 20 °C	
	EN17387	Wipes	1 min / low soil / 20 °C	>5 log reduction
		Conc 1%	5 mins / low soil / 20 °C	
		Conc 2%	5 mins / high soil / 20 °C	
EN16615	RTU	1 min / high soil / 20 °C	>5 log reduction ¹⁾	
	Wipes	1 min / low soil / 20 °C		
	Conc 1%	5 mins / low soil / 20 °C		
Staphylococcus aureus	EN13727	RTU	1 min / high soil / 20 °C	>5 log reduction
		Wipes	1 min / low soil / 20 °C	
		Conc 1%	5 mins / high soil / 20 °C	
	EN17387	Conc 2%	5 mins / low soil / 20 °C	>5 log reduction
		Conc 1%	5 mins / high soil / 20 °C	
		RTU	1 min / high soil / 20 °C	
EN16615	RTU	5 mins / low soil / 20 °C	>5 log reduction ¹⁾	
	Wipes	1 min / low soil / 20 °C		
	Conc 1%	5 mins / low soil / 20 °C		
Streptococcus pyogenes	EN13737	RTU	1 min / high soil / 20 °C	>5 log reduction
		Wipes	1 min / low soil / 20 °C	
		Conc 1%	5 mins / low soil / 20 °C	
	EN17387	Conc 1%	5 mins / low soil / 20 °C	>5 log reduction
		RTU	1 min / high soil / 20 °C	
		Wipes	1 min / low soil / 20 °C	

¹⁾ Modified Stainless Steel

MICROBIOLOGICAL EFFICACY



VIRUCIDAL EFFICACY

Test organisms	Test ref	Formula	Test conditions	Test result
Vaccinia virus including Coronavirus, Hepatitis B, Hepatitis C, Herpes simplex, HIV	EN14476	Conc 1%	1 min / low soil / 20 °C	>4 log reduction
		Conc 2%	15 mins / high soil / 20 °C	
		RTU	1 min / high soil / 20 °C	
	EN16777	Wipes	1 min / low soil / 20 °C	>4 log reduction
		Conc 1%	10 mins / low soil / 20 °C	
		Conc 2%	15 mins / high soil / 20 °C	
RTU		1 min / low soil / 20 °C		
Adenovirus	EN14476	Conc 10% & RTU	5 mins / low soil / 20 °C	>4 log reduction
	EN16777	Conc 10% & RTU	5 mins / low soil / 20 °C	>4 log reduction
Norovirus	EN14476	Conc 5%	5 mins / low soil / 20 °C	>4 log reduction
		Conc 10% & RTU	2 mins / low soil / 20 °C	
		RTU	5 mins / high soil / 20 °C	
	EN16777	Conc 5%	45 mins / low soil / 20 °C	>4 log reduction
		Conc 10% & RTU	30 mins / low soil / 20 °C	
		RTU	45 mins / high soil / 20 °C	

ADDITIONAL DATA

Test method	Test result
Preservative Efficacy Testing	Complies with the test for the Efficacy of Antimicrobial Preservatives (European Pharmacopoeia 11th Edition)
DNA/RNA Denaturation	Effective at denaturing DNA / RNA in 5 mins, at 1% dilution
Stain and odour testing	Effective at removing staining and odour from carpet tiles caused by common household agents including red wine, coffee, garden soil and synthetic cat vomit, at 20% dilution
Hard surface cleaning test	Effective at cleaning both synthetic cat vomit and blood stains from polyurethane substrate (substitute for hard flooring), at 2% dilution. Spray formula is proven to be compatible with dry wipes and microfibre clothes

VIRUCIDAL EFFICACY AGAINST BACTERIOPHAGES

Test organisms	Test ref	Formula tested	Test conditions	Test result
Lactococcus lactis subsp. lactis P001 DSM 4262	EN13610	Conc & RTU	5 mins / 1% acidic whey / 0.5% / 20 °C	>4 log reduction
Lactococcus lactis subsp. lactis P008 DSM 10567	EN13610	RTU	5 mins / 1% acidic whey / 0.5%, 20 °C	>4 log reduction
Lactococcus lactis subsp. lactis P008 DSM 10567	EN13610	Conc	5 mins / 1% acidic whey / 1%, 20 °C	>4 log reduction



Chemgene MEDLAB multi-surface disinfectants are compliant with regulations in the UK & EU including the Biocidal Products Regulation (BPR), Classification of Labelling and Packaging (CLP) and Registration, Evaluation, Authorisation and Restriction of Chemicals (REACH) regulations.