

The Plate Centrifuge.

GET SPINNING. IMPROVE PCR YIELDS.

Starlab's innovative Plate Centrifuge is tailored for the rapid and effortless centrifugation of samples in PCR plates. Use before and after thermal cycling to enhance your yield.

CONVENIENT, TIME SAVING

Now you can stop taking plates to the big centrifuge at the other end of the lab, and having to wait for it to unlock. This plate centrifuge can sit on your bench and will spin your plates in seconds.

FAST LOADING

Holds two PCR plates. Load the sealed plates vertically into the top slots.

TWO OPERATING MODES

SHORT: Use for short spins. Press and hold to run at maximum speed. The timer will count up. Release the button to stop centrifuging

TIMER: For longer centrifugation or hands-free operation, set a duration. Centrifuging will stop when the set time has elapsed.

NEW!



PRODUCT FEATURES

- Holds two plates
- Compatible with non-skirted, semi-skirted and skirted 96- and 384-well plates
- 2,500 rpm
- Two operating modes
- Starts / stops in seconds
- Convenient small footprint
- Optional adapter available for half plates or tubes
- 2 year guarantee

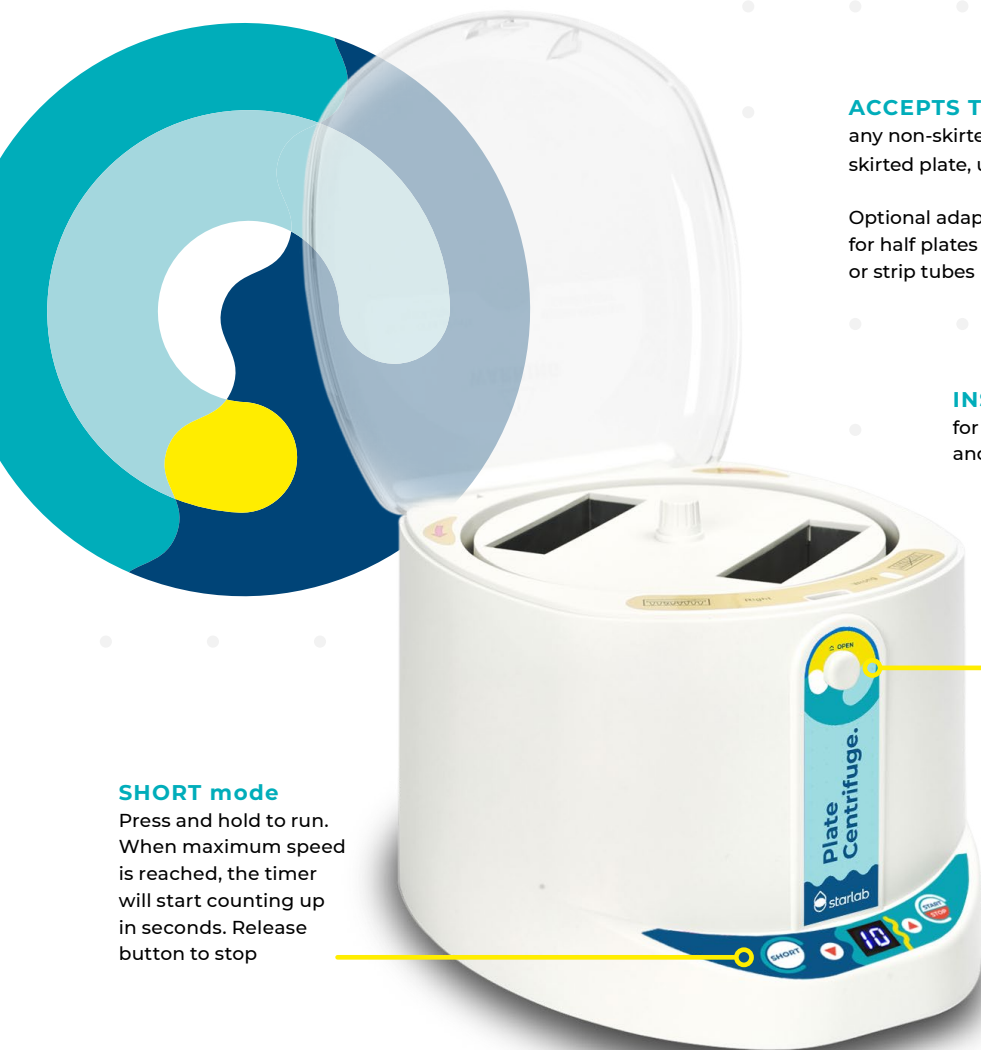
Passionate for science.



starlab.click/plate-centrifuge



Get spinning. Improve PCR yields.



SHORT mode

Press and hold to run. When maximum speed is reached, the timer will start counting up in seconds. Release button to stop

ACCEPTS TWO PLATES

any non-skirted, semi-skirted or skirted plate, up to 25 mm high

Optional adapter available for half plates or 0.2 ml single or strip tubes

INSTANT ACCESS

for quick loading and unloading of plates

OPEN LID

TIMER SETTING

Set the timer using the arrows. Timer can be set to seconds or minutes

Press START button and the timer will count down. When the set time has elapsed, a beep will sound once and the unit will automatically stop spinning

SMALL FOOTPRINT

TECHNICAL SPECIFICATIONS

| | |
|---------------------------------|---|
| Capacity | 2 x 96-/384-well PCR plates. Maximum plate height: 25 mm |
| Maximum speed | 2,500 rpm $\pm 10\%$ |
| Maximum RCF | 500 x g |
| Temperature range | 5°C to 40°C (up to 80% RH at 31°C, decreasing linearly to 50% RH at 40°C) |
| Timer capacity | 0 – 99 seconds / 0 – 99 minutes |
| Noise level | 51 dB ¹⁾ |
| Power adapter operating voltage | 100 to 240 V~, 50 to 60 Hz, 1.5A |
| Unit input | 24 VDC 45 W |
| Protection class | IP21 |
| Weight | 2.6 kg |
| Dimensions | 190 x 220 x 186 mm |

¹⁾ Operation noise level, excluding timer alarm

ORDERING INFORMATION



Plate Centrifuge¹⁾

N2631-0100

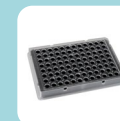


Plate Centrifuge Adapter
for use with 0.2 ml PCR tubes
& PCR strips, and 48-well
PCR Plates

N2631-0018

¹⁾ 2-year warranty.

 starlab.click/plate-centrifuge