

Cell culture challenges but
you continue to grow.
**You are passionate
for science.**

CELL CULTURE PRODUCTS

Your cells deserve the best.



WATCH VIDEO

Passionate for Science.
Starlab inspires and
supports the passion
driving your research.

Passionate for science.



Cell Culture Performance Ware.

YOUR CELLS DESERVE THE BEST

Starlab are liquid handling experts, recognised as a manufacturer and supplier of high quality plastic consumables for a wide range of applications in liquid handling, such as the TipOne® pipette tip system and ErgoOne® pipettes.

Our range of sterile products for Cell Culture carry on that tradition of quality with a range of cell culture performance ware and equipment for use in your daily cell culture workflows. Designed for optimal performance and manufactured to the highest quality standards, you can be sure to outfit your cells for true performance with Starlab cell culture products.

STARLAB QUALITY

As an ISO 9001 certified company, working procedures and processes at Starlab are checked and audited regularly and the quality of our products is continuously monitored. Starlab is also ISO 14001 certified.



CONTENTS

Contamination-Free Working Area

GuardOne® Workstation3

Media Preparation

Bottle Top Filtration Units & Media Bottles..... 4–5

Syringe Filters.....6

Media Handling

ErgoOne® FAST Pipette Controller7

Serological Pipettes8

Pipetting Small Liquid Volumes & Living Cells

TipOne® Pipette Tips & ErgoOne® Pipettes9

Wide Orifice tips 10

Cultivation

CytoOne® Dishes 11

CytoOne® Multiwell Plates.....12–13

CytoOne® Flasks with Vented Filter Caps14–15

CytoOne® Flasks with 2-Position Plug Seal Caps 16–17

Erlenmeyer Flasks 18–19

Change of Media

Aspirator20–21

Aspiration pipettes 22

Cell Harvesting

Cell Scrapers 23

Cell Strainers 24

15 ml & 50 ml Centrifuge Tubes 25

Cell Storage

Cryogenic vials 26

Storage Consumables 27

GuardOne® Workstation.

Suitable for non-pathogenic Class I cell culture applications.



 starlab.click/guardone

IT ALL STARTS WITH A CLEAN AND CONTAMINATION-FREE ENVIRONMENT!

With the GuardOne® Workstation you can confidently handle sensitive and critical applications—knowing your workspace is protected from contamination by bacteria, DNA, or RNA. Enjoy a clean, controlled environment that dramatically reduces the risk of cross-contamination, so your valuable samples and reagents¹⁾ stay safe.

GuardOne® empowers you to focus on your research, not on repeating work due to contamination. By safeguarding your experiments, you save both time and resources, ensuring your results are reliable the first time, every time.

Every aspect of GuardOne® has been designed with convenience in mind. All functions are controlled via the glove compatible, easy to use touchscreen. HEPA filter exchange and UV lamp exchange in just 2 minutes.



Dead Air Workstation 32"

S8040-1000



Dead Air Workstation 48"

S8040-1001



Laminar Flow Workstation 32"

S8040-0000



Laminar Flow Workstation 48"

S8040-0001



KEY FEATURES

- ✓ One-touch QuickStart / QuickStop
- ✓ Efficient UV_{245 nm} decontamination with timer function
- ✓ Efficient, class H14 HEPA filter with pre-filter, provides ISO class 5 working environment²⁾
- ✓ Real-time airflow measurement²⁾
- ✓ ~9000 hour UV lamp
- ✓ Life-span monitoring of consumables
- ✓ Certified RNase, DNase and Pyrogen free
- ✓ Virtually maintenance-free
- ✓ Easy to clean

¹⁾GuardOne® is not designed to protect the operator.

²⁾Laminar-flow models only.

Bottle Top Filtration System.

TOGETHER OR ON THEIR OWN

Experience flexibility and convenience with Starlab's Bottle Top Filtration system, designed to fit seamlessly into your workflow. Choose the configuration that suits your needs:

- **complete full assembly units** for ready to use filtration
- **bottle top funnels** to pair with your own bottles
- **media bottles** for versatile storage and preparation

Space-saving, plastic-waste saving: Its robust, compact design helps you maximise valuable bench space while the minimal vacuum packaging keeps your filtration products clean and ready to use, with less plastic waste.

Superior filtration performance: The high-quality PES membrane makes it easy to filter Fetal Bovine Serum (FBS) and other viscous solutions. PES filters are also ideal for pre-filtering before PFAS analysis.

The system is a perfect partner for your sterile filtration, media preparation and media storage needs. Available in 150 ml, 250 ml, 500 ml, and 1000 ml sizes, so you can select the perfect volume for your application.



QUALITY, QUALITY, QUALITY

Starlab's Bottle Top Filtration System (full assembly units, funnels only and media bottles) is manufactured under ISO13485 and ISO9001 quality management systems, in a Class 100,000 clean room environment and printed with the batch number for easy traceability, as well as the expiry date.

Ordering Information				
	150 ml	250 ml	500 ml	1000 ml
Full Assembly Unit				
	0.22 µm PES membrane	CC8221-3226 Pack of 12	CC8221-4226 Pack of 12	CC8221-5226 Pack of 12
	0.45 µm PES membrane	CC8221-3456 Pack of 12	CC8221-4456 Pack of 12	CC8221-5456 Pack of 12
Funnel Tops only				
	0.22 µm PES membrane	CC8222-3226 Pack of 24	CC8222-4226 Pack of 24	CC8222-5226 Pack of 24
	0.45 µm PES membrane	CC8222-3456 Pack of 24	CC8222-4456 Pack of 24	CC8222-5456 Pack of 24
Media Bottles only				
	Bottle & Cap	CC8221-3000 Pack of 24	CC8221-4000 Pack of 24	CC8221-5000 Pack of 24



starlab.click/filtration

THE PERFECT PARTNER

Starlab Aspirator,
see pages 20 & 21



KEY FEATURES

- ✓ Crystal clear polystyrene funnel top and bottle base
- ✓ Funnels with PES membrane with 0.22 µm or 0.45 µm pore size
- ✓ GL45 thread compatible funnels
- ✓ Temperature use: -20 °C to +50 °C
- ✓ Sterile (SAL 10⁻⁶) to ISO11137
- ✓ 3-year shelf life
- ✓ Certified RNase, DNase and Pyrogen free
- ✓ Certified non-cytotoxic
- ✓ Certified heavy metal free
- ✓ Reduced plastic vacuum packaging



150 ml



250 ml



500 ml



1000 ml

Syringe Filters.







DESIGNED FOR EFFICIENCY AND SAFETY

Starlab's Syringe Filters are designed to help you get the most out of every sample. With a low hold-up volume—nearly half that of other filters—you'll recover more of your valuable solution, saving money and resources with every use. These 33 mm diameter filters are suitable for volumes 10–200 ml. Use for cell culture media and additives, biological solutions and buffers.

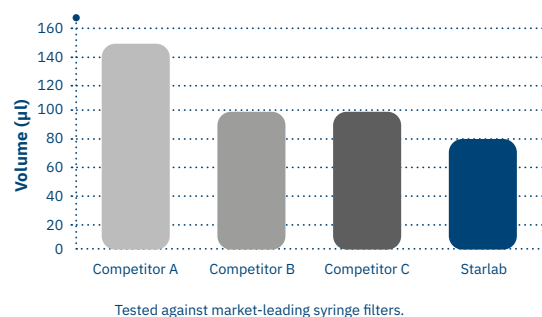
KEY FEATURES

- ✓ Colour coded filters make it easy to select the correct filter
- ✓ High bubble point membrane provides tighter pore size for greater security
- ✓ High burst pressure ensures safe operation
- ✓ Large filtration surface area allows you to filter your sample more easily
- ✓ Low hold-up volume provides maximum recovery of your solution
- ✓ Surfactant-free membrane for cleanliness in downstream applications
- ✓ Sterile (SAL 10^{-6})



Description	Pack Size	Art. No.
PES Membrane		
 0.22 µm Syringe Filter, PES (Sterile), Yellow, Ø 33 mm	100	E4780-1226
 0.45 µm Syringe Filter, PES (Sterile), Yellow, Ø 33 mm	100	E4780-1456
PVDF Membrane		
 0.22 µm Syringe Filter, PVDF (Sterile), Blue, Ø 33 mm	100	E4780-1221
 0.45 µm Syringe Filter, PVDF (Sterile), Blue, Ø 33 mm	100	E4780-1451
Cellulose Acetate Membrane		
 0.22 µm Syringe Filter, Cellulose Acetate (Sterile), Orange, Ø 33 mm	100	E4780-1223
 0.45 µm Syringe Filter, Cellulose Acetate (Sterile), Orange, Ø 33 mm	100	E4780-1453

Up to nearly half the hold-up volume of other syringe filters.



Starlab Syringe Filters have nearly half the hold-up volume of some competitor syringe filters which means a lot less expensive media being wasted / held up in the syringe. Use our Syringe Filters just 20 times to save up to 140 µl, so just think of the savings you'll make over the course of a month, or over a year.



Individually wrapped in plastic-paper blister packs with Lot No. and sterile validity date printed on every pack.



Supplied in convenient, dispenser style boxes



starlab.click/syrefilters

ErgoOne® FAST Pipette Controller.

FAST, ACCURATE, SAFE TRANSFER

Transform your liquid handling experience with the ErgoOne® FAST—designed to make every pipetting task easier, faster, and more comfortable.

Its lightweight, ergonomic design fits perfectly in your hand, minimising fatigue even during long sessions. Enjoy precise, responsive control thanks to pressure-sensitive buttons, and experience true speed: fill a 25 ml pipette in less than four seconds!



WATCH VIDEO

starlab.click/ergoonefast

Description	Art. No.
ErgoOne® FAST pipette Controller ¹⁾	S7166-0010
<small>¹⁾Supplied with battery, power supply, 0.2 µl filter, 0.45 µl filter and a wall mount. 2-year warranty.</small>	



Pressure responsive speed controls



Autoclavable aspiration cone and silicone pipette holder ensures a secure seal for your liquids while the filter protects your pipette



Traffic light battery life indicator



Easy to replace battery

KEY FEATURES

- ☑ Lightweight and ergonomic
- ☑ Designed to balance perfectly in the hand for maximum comfort
- ☑ Smooth operation via pressure sensitive control buttons
- ☑ Fast! Fills a 25 ml pipette in less than 4 seconds
- ☑ Longlife battery provides ~2000 x 25 ml aspiration cycles on full charge
- ☑ Battery life indicator
- ☑ Battery maintains constant pipetting speed that does not diminish as battery charge declines
- ☑ Can be recharged during use
- ☑ Use with all glass or plastic pipettes 1.0 ml to 100 ml



Handy benchtop support allows you to place the controller on the bench or hood floor without risk of contamination

ErgoOne® FAST Benchtop Support

Art. No: P7166-6306

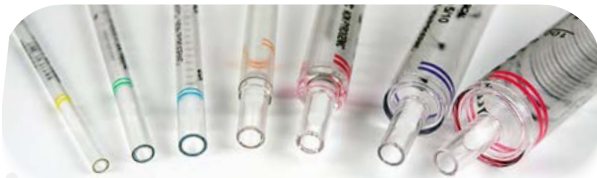
Serological Pipettes.

SEROLOGICAL PIPETTES

Designed to deliver accuracy, convenience, and safety. These polystyrene pipettes for sterile serological and tissue culture applications have colour-coding on both the pipettes and packaging to provide quick and easy volume identification.

Volume	Colour Coding	Pack Size	Art. No.
1.0 ml	Yellow	500	E4860-0001
2.0 ml	Green	500	E4860-0002
5.0 ml	Blue	200	E4860-0005
10 ml	Orange	200	E4860-0010
25 ml	Red	150	E4860-0025
50 ml	Purple	100	E4860-0050
100 ml	Pink	50	E4860-1100

 starlab.click/serologicalpipettes



TRACEABILITY

Each individually wrapped pipette features a printed lot number and expiry date, supporting easy tracking and regulatory compliance



KEY FEATURES

- ✓ Accuracy $\pm 2\%$
- ✓ Colour coded, individual paper-plastic peel-back wraps with printed lot number and expiry date
- ✓ Pipettes are colour coded for easy volume identification
- ✓ Black printed, easy to read ascending and descending graduations
- ✓ Bidirectional graduations on pipettes 10 ml and above
- ✓ Gamma sterilised to SAL 10^{-6} (ISO 11137)¹
- ✓ Certified RNase, DNase, Pyrogen and latex free¹
- ✓ Non-cytotoxic and non-haemolytic USP Class VI Polystyrene¹
- ✓ ISO9001 and ISO13485 manufactured
- ✓ Supplied in convenient, dispenser style boxes



Serological pipettes are supplied in convenient dispenser-style boxes for easy access when stacked

ErgoOne® Pipettes.

With trusted accuracy and precision, ErgoOne® helps you achieve consistent, reproducible results you can count on. Designed with ergonomics in mind, the comfortable grip and smooth plunger action help keep your thumb and hand relaxed, making repetitive tasks easier and more enjoyable.

KEY FEATURES

- ✓ Ergonomic design
- ✓ Low maintenance
- ✓ Volume lock
- ✓ Accuracy and precision you can trust
- ✓ Fully autoclavable
- ✓ Universal tip fit



WATCH VIDEO



starlab.click/manualpipettes

TipOne® Sterile Filter Tips.

Protect your samples against unwanted contamination with TipOne® filter tips. The TipOne® filter is one of the best on the market and protects against aerosol cross-contamination without trapping your valuable samples. The filters contain no additives to interfere with samples.



STERILE RACKED

- ✓ Wafer locks securely into rack for stability during pipetting
- ✓ Stackable
- ✓ Reusable with TipOne® refills
- ✓ Base includes post-consumer recycled TipOne® plastic¹⁾
- ✓ Recyclable



TIPONE VIDEO



STERILE REFILLS

- ✓ Economical, plastic-saving alternative to racked filter tips
- ✓ Fully enclosed refill means tip sterility is never compromised during loading
- ✓ Clear refill shells made from 100% recycled plastic
- ✓ Recyclable



REFILL VIDEO



starlab.click/tipone

For information on the **TipOne® closed-loop recycling service**: starlab.click/recycling

¹⁾ TipOne racks produced in Germany.

Wide Orifice Pipette Tips.

Wide Orifice Tips

All tips are certified and natural in colour. Tips shown approx. actual size.

Racked tips are supplied in autoclavable polypropylene racks. Filter tips are not autoclavable.



200µl Graduated Tip / Wide Orifice

For use with: ErgoOne®, Gilson®, Biohit®, Brand®, Capp®, Eppendorf®, Finnpiquette®, Hamilton®, Hirschmann®, HTL®, Nichiryo®, Rainin®, Sartorius®, Socorex®, StarPet®, StarPet® E, VWR®

Pack Type Sterile Pack Size Article No.

Bag No 1000 **E1011-8000**

96-Tip Rack No 10 x 96 **E1011-8400**

96-Tip Rack Yes 10 x 96 **E1011-8410**



200µl Graduated Filter Tip / Wide Orifice

For use with: ErgoOne®, Gilson®, Biohit®, Brand®, Capp®, Eppendorf®, Finnpiquette®, Hamilton®, Hirschmann®, HTL®, Nichiryo®, Rainin®, Sartorius®, Socorex®, StarPet®, StarPet® E, VWR®

96-Tip Rack Yes 10 x 96 **E1011-8420**



200µl XL Graduated Tip / Wide Orifice

For use with: ErgoOne®, Gilson®, Biohit®, Brand®, Capp®, Eppendorf®, Finnpiquette®, Hamilton®, Hirschmann®, HTL®, Nichiryo®, Rainin®, Sartorius®, Socorex®, StarPet®, StarPet® E, VWR®

96-Tip Rack No 2 x 96 **E1011-7400**

96-Tip Rack Yes 2 x 96 **E1011-7410**



200µl XL Graduated Filter Tip / Wide Orifice

For use with: ErgoOne®, Gilson®, Biohit®, Brand®, Capp®, Eppendorf®, Finnpiquette®, Hamilton®, Hirschmann®, HTL®, Nichiryo®, Rainin®, Sartorius®, Socorex®, StarPet®, StarPet® E, VWR®

96-Tip Rack Yes 2 x 96 **E1011-7420**



1000µl XL Graduated Tip / Wide Orifice

For use with: ErgoOne®, Gilson®, Biohit®, Brand®, Capp®, Eppendorf®, Finnpiquette®, Hamilton®, Hirschmann®, HTL®, Nichiryo®, Rainin®, Sartorius®, Socorex®, StarPet®, StarPet® E, VWR®

Bag No 1000 **E1011-9000**

96-Tip Rack No 10 x 96 **E1011-9400**

96-Tip Rack Yes 10 x 96 **E1011-9410**



1000µl XL Graduated Filter Tip / Wide Orifice

For use with: ErgoOne®, Gilson®, Biohit®, Brand®, Capp®, Eppendorf®, Finnpiquette®, Hamilton®, Hirschmann®, HTL®, Nichiryo®, Rainin®, Sartorius®, Socorex®, StarPet®, StarPet® E, VWR®

96-Tip Rack Yes 10 x 96 **E1011-9420**

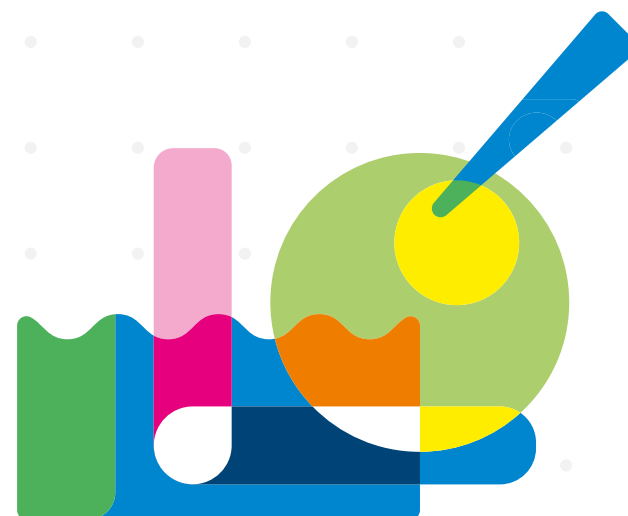


starlab.click/wideorificetips

LET IT FLOW

Experience smoother, more efficient pipetting with wide orifice tips, designed to maximise liquid flow. These tips help you handle even the most challenging samples with ease.

Protect delicate DNA/RNA and cell samples from damaging shear forces, preserving their integrity for reliable results. Effortlessly pipette thick, viscous liquids like pure glycerol or Triton X-100, saving time and reducing frustration in your workflow.



CytoOne® Dishes.



TESTED FOR QUALITY

Produced in cleanroom conditions, CytoOne® dishes are put through stringent testing. Culture tests are performed to assure proper cell attachment and growth. Benefit from dishes that are tested for wettability and flatness to guarantee uniform performance. Plus, the dishes are visually inspected to eliminate defects and scratches to protect your valuable cell cultures from unexpected issues. Available with tissue culture (TC) treatment for optimum cell attachment and growth, or non-treated for suspension cultures.

KEY FEATURES

- ✓ Vented lids improve gas exchange
- ✓ Stacking rings with vented design for thermal equalisation
- ✓ Easy open sleeves in convenient small pack sizes
- ✓ Optical clarity provides distortion free microscopy
- ✓ Sturdy flat bases resist bowing and warping
- ✓ Untreated lids to minimise condensation
- ✓ Gamma sterilised (SAL 10⁻⁵)
- ✓ Certified RNase, DNase, DNA and pyrogen free

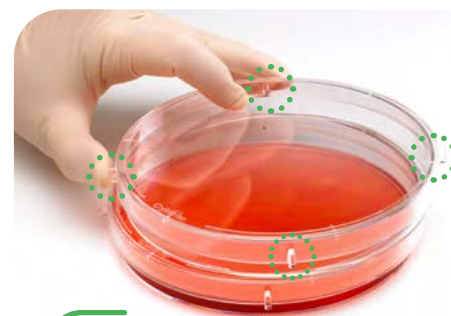


starlab.click/dishes

Description	Pack Size	Art. No.
TC Treated		
35 x 10 mm CytoOne® Dish	10 x 30	CC7682-3340
60 x 15 mm CytoOne® Dish	10 x 30	CC7682-3359
100 x 20 mm CytoOne® Dish	10 x 30	CC7682-3394
150 x 20 mm CytoOne® Dish	5 x 12	CC7682-3614
Non-Treated		
35 x 10 mm CytoOne® Dish	10 x 30	CC7672-3340
60 x 15 mm CytoOne® Dish	10 x 30	CC7672-3359
100 x 20 mm CytoOne® Dish	10 x 30	CC7672-3394
150 x 20 mm CytoOne® Dish	5 x 12	CC7672-3614

Technical specifications

Outer Dimensions x Height	Growth area	Inner dimension	Working volume
35 x 10 mm	9.6 cm ²	35 mm	2.0 ml
60 x 15 mm	21 cm ²	52 mm	5.0 ml
100 x 20 mm	55 cm ²	90 mm	10 ml
150 x 20 mm	149 cm ²	138 mm	30 ml



The lids of the 150 mm dishes have four ergonomically placed grip tags (circled above) for easier handling



Bevelled base on the 35 mm and 60 mm dishes makes it easier to pick up these small dishes without accidentally losing the lower shell



Customers have reported successful use of many cell lines and cell types with CytoOne® products:

starlab.click/cyto-cell-lines

CytoOne® Multiwell Plates.



PREMIUM PLATES. RELIABLE RESULTS.

CytoOne® plates minimise contamination at every step. The non-reversible lids with condensation rings keep unwanted moisture and contaminants out, while the vented lids encourage healthy cell growth by optimising gas exchange. Support tabs keep lids elevated when set aside or propped open, reducing contact with the bench and further protecting your samples.

Whether you're working on single-cell isolation or scaling up your cultures, CytoOne® plates offer the flexibility you need. Choose tissue culture (TC) treated plates for optimal cell attachment and growth, or non-treated plates for applications like hybridoma or lymphocyte culture.

QUALITY ASSURED

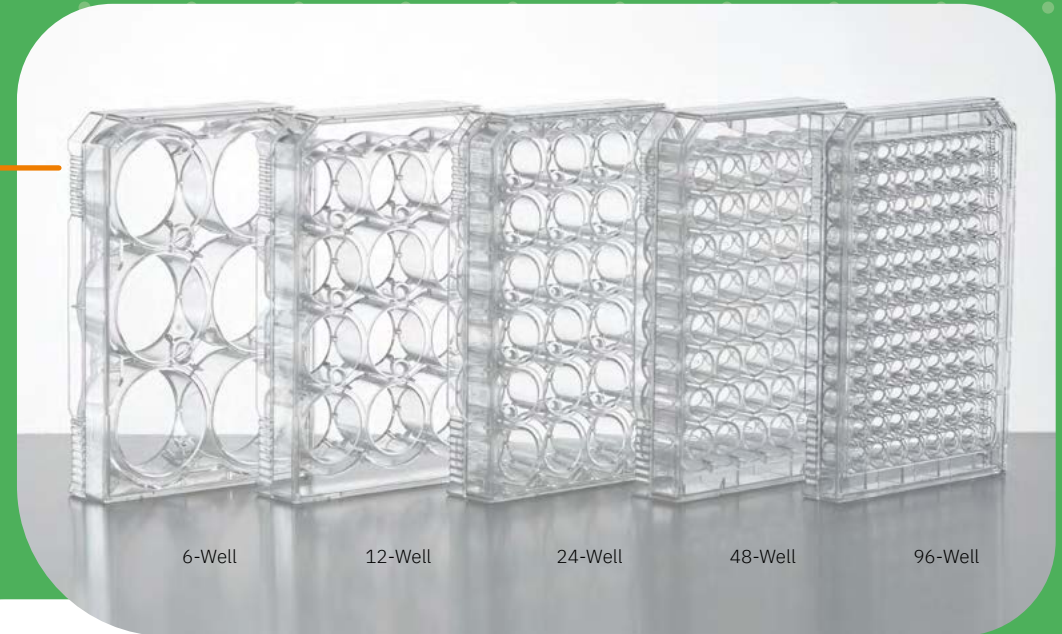
Made from crystal clear premium grade, non-toxic virgin polystyrene, CytoOne® plates are individually wrapped with the lot number on the packaging for full traceability. Produced in a cleanroom environment, CytoOne® products are put through stringent testing. Plates are tested for wettability and flatness, and visually inspected to eliminate defects and scratches. Culture tests are performed on treated plates to assure proper cell attachment and growth.



Customers have reported successful use with many cell lines and cell types with CytoOne® products:

starlab.click/cyto-cell-lines

Four vents on the skirt of each plate improves gas exchange, and reduces condensation and surface tension between stacked plates



KEY FEATURES

- ✓ Complete 360° chimney wells prevents cross-contamination and provides uniform temperature transfer across all wells (see next page for more info)
- ✓ Vented skirt reduces condensation and surface tension between stacked plates
- ✓ Frosted writing surface on lid
- ✓ Optical clarity provides distortion-free microscopy
- ✓ Moulded alpha-numeric matrix
- ✓ Gamma sterilised (SAL 10⁻⁵) and certified RNase, DNase, DNA and Pyrogen free



starlab.click/multiwellplates

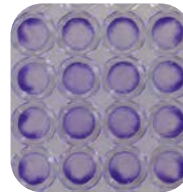


MINIMISING THE 'EDGE EFFECT' WITH CYTOONE®

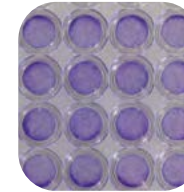
CytoOne® plates have chimney wells with a complete 360° open channel around each well. Filling the channels with medium during incubation helps reduce clumping of cells towards the edges, resulting in a more uniform cell layer. Tests were carried out on six other brands of 96-well tissue culture plates which were seeded and incubated under the same conditions as a CytoOne® Plate. All displayed an edge effect which could affect the integrity of our your data. Download the Product Data Sheet for full details:

starlab.click/edgeeffect

Cell growth in a CytoOne® plate with the channels between the 360° chimney wells left empty.



Cell growth in a CytoOne® plate with the channels filled with DMEM medium shows a marked reduction in 'edge effect'.



Media Volumes to add to each plate:

6-well: 15–20 ml
12-well: 20–25 ml
24-well: 20–25 ml
48-well: 20–25 ml
96-well: 10–12 ml

Plate A

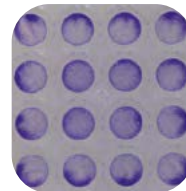


Plate B

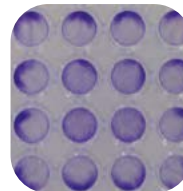


Plate C

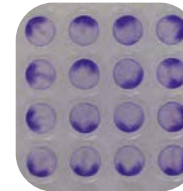


Plate D

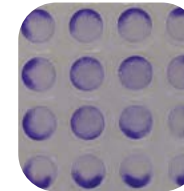


Plate E

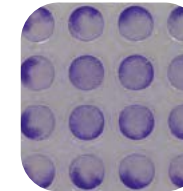
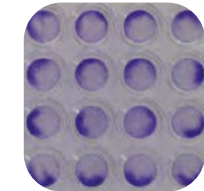


Plate F



NIH3T3 cells stained with Crystal-Violet after 24 hours at 37 °C, 5 % CO₂.
Initial seeding 0.01 x 10⁶ cells per well.

Description Pack Size Art. No.

TC Treated Plates

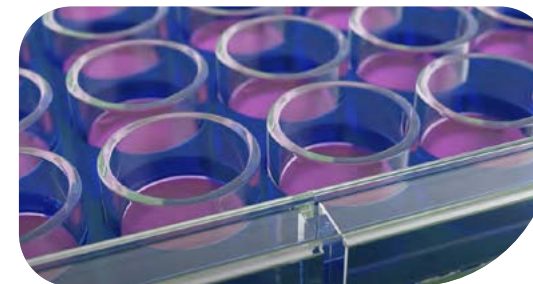
6-Well CytoOne® Plate	50	CC7682-7506
12-Well CytoOne® Plate	50	CC7682-7512
24-Well CytoOne® Plate	50	CC7682-7524
48-Well CytoOne® Plate	50	CC7682-7548
96-Well CytoOne® Plate	50	CC7682-7596

Non-Treated Plates

6-Well CytoOne® Plate	50	CC7672-7506
12-Well CytoOne® Plate	50	CC7672-7512
24-Well CytoOne® Plate	50	CC7672-7524
48-Well CytoOne® Plate	50	CC7672-7548
96-Well CytoOne® Plate	50	CC7672-7596

Technical specifications

Number of wells	Growth area	Working volume	Well diameter
6 wells	9.6 cm ²	2.0 ml	3.46 cm
12 wells	3.8 cm ²	1.5 ml	2.21 cm
24 wells	1.9 cm ²	1.0 ml	1.55 cm
48 wells	0.76 cm ²	0.5 ml	0.98 cm
96 wells	0.32 cm ²	0.2 ml	0.64 cm



[WATCH VIDEO](#)

Complete 360° chimney well design on all CytoOne® plates prevents cross-contamination and provides uniform temperature transfer across all wells, resulting in a more uniform cell layer. Watch our video to see how CytoOne® plates are designed to prevent the edge effect so you can use all 96-wells of a plate.

CytoOne® Flasks with Vented Filter Caps.

VENTED CAPS FOR GAS EXCHANGE

Allow optimal gas exchange while maintaining a sterile environment! Vented filter caps have an integrated 0.2 µm hydrophobic membrane to block bacteria and fungal contaminants entering the flask. This reduces the risk of losing valuable cultures to contamination and keeps your experiments on track.

Choose tissue culture (TC) treated for optimum cell attachment and growth or non-treated for hybridoma and suspension cultures. The T-25, T-75, and T-150 flasks have traceable lot numbers etched into the base.

QUALITY ASSURANCE

CytoOne® is produced in a cleanroom environment and put through stringent testing. Culture tests are preformed on treated flasks to assure proper cell attachment and growth. Every flask is pressure tested for leak-free assurance, and the flasks are tested for wettability and flatness, as well as visually inspected to eliminate defects and scratches.

Customers have reported successful use with many cell lines and cell types with CytoOne® products:

starlab.click/cyto-cell-lines

KEY FEATURES

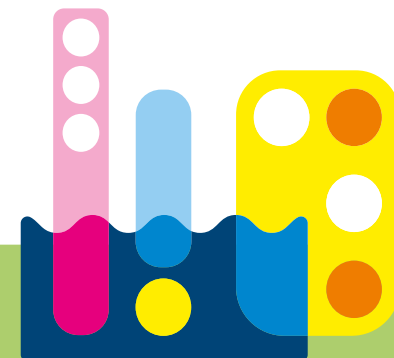
- ✓ All flasks 100% pressure tested for leak-free assurance
- ✓ Stacking rims with vented design for thermal equalisation
- ✓ Anti-tilt skirts and base bars improve stability
- ✓ Wide necks provide easy access while minimising contamination
- ✓ Convenient moulded graduations
- ✓ Frosted writing surfaces
- ✓ Gamma sterilised (SAL 10⁻⁵)
- ✓ Certified RNase, DNase, DNA and Pyrogen free



CytoOne® vented filter caps have 0.2 µm hydrophobic membrane for gas exchange and to exclude bacteria and fungal contaminants











starlab.click/flasks



Ordering information

CytoOne®

Flasks with Vented Filter Caps

Description	Pack Size	Art. No.
TC Treated		
 T-25 CytoOne® Flask, Vented	30 x 10	CC7682-4825
 T-75 CytoOne® Flask, Vented	20 x 5	CC7682-4875
 T-150 CytoOne® Flask, Vented	8 x 5	CC7682-4815
 T-225 CytoOne® Flask, Vented	5 x 5	CC7682-4822
Non-Treated		
 T-25 CytoOne® Flask, Vented	30 x 10	CC7672-4825
 T-75 CytoOne® Flask, Vented	20 x 5	CC7672-4875
 T-150 CytoOne® Flask, Vented	8 x 5	CC7672-4815
 T-225 CytoOne® Flask, Vented	5 x 5	CC7672-4822



starlab.click/flasks



Non-treated flasks can be identified by their white caps



All flasks supplied in easy-open, resealable zip top bags to protect unused flasks

CERTIFIED



Technical specifications

Flask type	Growth area	Neck	Working volume	Max. volume without neck	Max. volume with neck
T-25	25 cm ²	Canted	5.0 ml	70 ml	75 ml
T-75	75 cm ²	Canted	20 ml	279 ml	290 ml
T-150	150 cm ²	Canted	30 ml	591 ml	603 ml
T-225	225 cm ²	Angled	60 ml	1,006 ml	1,024 ml

CytoOne® Flasks with 2-Position Plug Seal Caps.

MANUAL VENTING OR AIRTIGHT SEAL

For flexible gas exchange options, the two-position plug seal cap adapts to your needs! Closed: for a complete seal, protecting your cultures from contamination during transport or storage. Open (vented): to allow controlled gas exchange for healthy growth.

The T-25, T-75, and T-150 flasks have traceable lot numbers etched into the base. Choose tissue culture (TC) treated for optimum cell attachment and growth or non-treated for hybridoma and suspension cultures.

QUALITY ASSURANCE

CytoOne® is produced in a cleanroom environment and put through stringent testing. Culture tests are preformed on treated flasks to assure proper cell attachment and growth. Every flask is pressure tested for leak-free assurance, and the flasks are tested for wettability and flatness, as well as visually inspected to eliminate defects and scratches.

KEY FEATURES

- ✓ All flasks 100% pressure tested for leak-free assurance
- ✓ Stacking rims with vented design for thermal equalisation
- ✓ Anti-tilt skirts and base bars improve stability
- ✓ Wide necks provide easy access while minimising contamination
- ✓ Convenient moulded graduations
- ✓ Frosted writing surfaces
- ✓ Gamma sterilised (SAL 10⁻⁵)
- ✓ Certified RNase, DNase, DNA and Pyrogen free



CytoOne® two-position plug seal caps allow you to choose secure manual venting or an airtight seal



starlab.click/flasks











Customers have reported successful use with many cell lines and cell types with CytoOne® products:

starlab.click/cyto-cell-lines

Ordering information

CytoOne®

Flasks with 2-Position Plug Seal Caps

Description	Pack Size	Art. No.
TC Treated		
 T-25 CytoOne® Flask,	30 x 10	CC7682-4325
 T-75 CytoOne® Flask,	20 x 5	CC7682-4175
 T-150 CytoOne® Flask,	8 x 5	CC7682-4415
 T-225 CytoOne® Flask,	5 x 5	CC7682-4225
Non-Treated		
 T-25 CytoOne® Flask,	30 x 10	CC7672-4325
 T-75 CytoOne® Flask,	20 x 5	CC7672-4175
 T-150 CytoOne® Flask,	8 x 5	CC7672-4415
 T-225 CytoOne® Flask,	5 x 5	CC7672-4225



starlab.click/flasks



Non-treated flasks can be identified by their white caps



All flasks supplied in easy-open, resealable zip top bags to protect unused flasks

CERTIFIED



Technical specifications

Flask type	Growth area	Neck	Working volume	Max. volume without neck	Max. volume with neck
T-25	25 cm ²	Canted	5.0 ml	70 ml	75 ml
T-75	75 cm ²	Canted	20 ml	279 ml	290 ml
T-150	150 cm ²	Canted	30 ml	591 ml	603 ml
T-225	225 cm ²	Angled	60 ml	1,006 ml	1,024 ml

Erlenmeyer Flasks.

ONE FLASK FOR EVERY CULTURE

Starlab's Erlenmeyer flasks make your cell cultivation work easier, more flexible, and more cost-effective. You can confidently use these flasks for bacteria, yeast, fungi, or plant and animal cells in suspension, knowing they're designed to meet a wide range of laboratory needs.

Enjoy maximum convenience with vented caps featuring an integrated 0.22 µm PTFE membrane—perfect for both vented and non-vented applications. This flexibility lets you adapt quickly to different protocols without switching equipment.

Better still, the flasks are autoclavable and designed for repeated use. The flasks have been **tested and will withstand at least 10 autoclave cycles!**

Available in sizes from 125 ml to 3000 ml, with your choice of flat or baffled base, these flasks offer tailored options to suit your specific application.

KEY BENEFITS:

- ✓ Dual function, vented caps provide sterile air exchange or a tight seal
- ✓ 0.22 µm PTFE cap membrane
- ✓ GL45 thread compatible funnels
- ✓ Compatible with standard shaking incubator tables and clamps
- ✓ Sterility level (SAL 10⁻⁶) fulfills the highest demands
- ✓ Certified RNase, DNase, DNA and Pyrogen free
- ✓ Tested to withstand at least 10 autoclave cycles
- ✓ Shatterproof
- ✓ Visibly clearer than glass, with no etches to prevent the removal of chemical residues









DUAL-FUNCTION CAPS

Polypropylene caps with a 0.22 µm PTFE membrane, ideal for both aerobic and anaerobic cultures. Remove the top section to allow sterile exchange, and then replace when ready. No contamination risk or hassle of switching caps. Now you can stock only one flask type for all cultures.

CERTIFIED



Description	Pack Size	Art. No.
FLAT BASE		
125 ml Erlenmeyer Flask, Flat Base	24	E5000-1012
250 ml Erlenmeyer Flask, Flat Base	12	E5000-1025
500 ml Erlenmeyer Flask, Flat Base	12	E5000-1050
1000 ml Erlenmeyer Flask, Flat Base	6	E5000-1100
2000 ml Erlenmeyer Flask, Flat Base	6	E5000-1200
3000 ml Erlenmeyer Flask, Flat Base	3	E5000-1300
BAFFLED BASE		
125 ml Erlenmeyer Flask, Baffled Base	24	E5001-1012
250 ml Erlenmeyer Flask, Baffled Base	12	E5001-1025
500 ml Erlenmeyer Flask, Baffled Base	12	E5001-1050
1000 ml Erlenmeyer Flask, Baffled Base	6	E5001-1100
2000 ml Erlenmeyer Flask, Baffled Base	6	E5001-1200
3000 ml Erlenmeyer Flask, Baffled Base	3	E5001-1300

TECHNICAL SPECIFICATIONS*						
						
Flask volume	125 ml	250 ml	500 ml	1000 ml	2000 ml	3000 ml Fernbach Style
Recommended fill volume	31 – 50 ml	62 – 100 ml	125 – 200 ml	250 – 400 ml	500 – 800 ml	750 – 1200 ml
Base diameter	71 mm	83 mm	105 mm	137 mm	165 mm	230.5 mm
Height (w/o cap)	105 mm	133 mm	156 mm	204 mm	265 mm	250 mm
Height (with cap)	114.3 mm	142.3 mm	165.3 mm	215.8 mm	276.8 mm	260 mm
Sterility level / shelf life	SAL 10 ⁻⁶ / 5 years					
Cap air flow	3 L/min/cm ²					
Recommended rotation speed	0 - 200 rpm					
Temperature range	Flasks: -40 °C to 125 °C / Caps: 0 °C to 125 °C					
Autoclavable	Yes (caps and flasks, at least 10 cycles). Please refer to instructions.					
*Specifications relate to both flat and baffled base flasks. All baffled flasks have four baffles on the base.						



starlab.click/erlenmeyers



Aspirator.



SAVE TIME AND EFFORT DURING ROUTINE LABORATORY WORKFLOWS

Quickly and thoroughly remove liquids from culture vessels, tubes or wells during routine laboratory workflows like media changes, washing or waste disposal. Designed for the safe and efficient aspiration of fluids, the vacuum level and suction power on Starlab's Aspirator is adjustable in eight steps (150 to 850 mbar) for safe and reproducible working.

The chemically-resistant pump automatically switches on/off to reduce noise level in the workplace. The ergonomically-designed hand controller is fully autoclavable. Collection containers are available in two options; 4 L polypropylene and 2 L glass bottles. You can also use the Aspirator as a mobile vacuum source for sterile filtration and solid phase extraction.



Easy to handle

Pressing the lever allows fine adjustment of the suction power. Permanent suction can also be enabled.



8-channel tip adapter

The 8-channel adapter for 200 µl and 300 µl pipette tips is the perfect choice for working with cell culture plates.



Hydrophobic filter

Hydrophobic filter prevents contamination of environment and provides overfill protection.



Quick coupling

Autoclavable, self-sealing quick couplings allow safe decontamination of biological risks.

USE TWO HAND CONTROLLERS WITHOUT ANY LOSS OF PERFORMANCE

- The powerful pump can operate two hand controllers without any loss of performance
- Chemically-resistant, high performance pump with long service life
- Auto ON-OFF pump switch with low noise emission for a quieter working environment
- Ergonomic, fully autoclavable hand controller
- Intuitive, reproducible adjustment of suction power via touch panel

Technical specifications

Maximum pumping speed	16.7 l/min
Adjustable range of vacuum	150 – 850 mbar
Maximum permissible inlet/outlet pressure	1.1 bar
Noise level	45 dB(A)
Permissible ambient temperature	10 – 40 °C
Permissible relative humidity	38 – 85 %
Maximum power consumption	40 W
Power supply	230 V + 10 %, 50/60 Hz
Weight	7.3 kg
Dimensions (W × D × H)	408 × 194 × 500 mm

THE IMPORTANCE OF ACCESSORIES! HERE'S A GUIDE OF WHAT TO BUY

To add an exchange bottle:

N2400-9010 (fast coupling N2400-9008 also recommended)

To have a self-sealing system applicable for biological risks:

N2400-9008 plus N2400-9009



WATCH VIDEO

N2400-9000¹⁾ includes everything you need to get started: Aspirator, 4 Litre Polypropylene Bottle with Protection Filter and Inlet Pipe, Hand Controller, including 2.5 m Tubing, Wall Mount, Adapter for Pipettes, and an Adapter for Pipette Tips.

To have a benchtop stand for your Hand Controller:

N2400-9004

To have a tip ejector for your Hand Controller:

N2400-9002

To have a fast coupling system:

N2400-9008 plus N2400-9009.

To use stronger chemicals (eg. sodium hypochlorite) or staining solutions:

N2400-9012 plus N2400-9013

To work with cell culture plates:

N2400-9003

To add a second Hand Controller:

N2400-9001 plus N2400-9006 or N2400-9008



WATCH VIDEO

To have easy access to your under bench Aspirator

N2400-9014



Description

Art. No.



Aspirator

N2400-9000

¹⁾ Aspirator is supplied with everything you need to get started. 1-year warranty.

Accessories



Hand Controller for Aspirator.
Includes one Adapter for Pipettes, one Adapter for Pipette Tips, a Wall Mount, and 2.5 m Tubing.

N2400-9001



1-Channel Tip Adapter for Hand Controller

N2400-9002



8-Channel Tip Adapter for Hand Controller

N2400-9003



Stand for Hand Controller

N2400-9004



Tubing for Hand Controller (2.5 m)

N2400-9005



Connection Kit for Second Hand Controller

N2400-9006



Protection Filter with Connective Tubing

N2400-9007



Quick Coupling: Hand Controller to Bottle

N2400-9008



Quick Coupling: Bottle to Pump

N2400-9009



4 Litre Polypropylene Bottle with Filter and Inlet Pipe

N2400-9010



4 Litre Polypropylene Bottle with Screw Cap

N2400-9011



2 Litre Glass Bottle with Filter and Inlet Pipe

N2400-9012



Adapter for 2 Litre Glass Bottle

N2400-9013



Mobile Underframe

N2400-9014



Tool for Diaphragm Change

N2400-9015



Adapter for Pipettes

N2400-9016

Aspiration pipettes.

ASPIRATION PIPETTES

Designed for the quick and effective removal of liquids, disposable aspiration pipettes eliminate the need for cleaning and sterilisation, saving time and reducing the risk of contamination. Use for vacuum aspirating procedures or the transfer of fluids where volume accuracy is not a requirement.



 starlab.click/aspirationpipettes

Lot number and expiry date printed on every aspiration and serological wrap



Volume	Pack Colour	Pack Size	Art. No.
2.0 ml	Black	500	E4861-0002
5.0 ml	Blue	200	E4861-0005
10 ml	Orange	200	E4861-0010

KEY FEATURES

- ✓ Accuracy $\pm 2\%$
- ✓ Colour coded, individual paper-plastic peel-back wraps with printed lot number and expiry date
- ✓ Gamma sterilised to SAL 10^{-6} (ISO 11137)¹⁾
- ✓ Certified RNase, DNase, Pyrogen and latex free¹⁾
- ✓ Non-cytotoxic and non-haemolytic USP Class VI Polystyrene¹⁾
- ✓ ISO9001 and ISO13485 manufactured
- ✓ Supplied in convenient, dispenser style boxes



Aspiration pipettes are supplied in convenient dispenser-style boxes for easy access when stacked



Cell Scrapers.

GENTLE HARVESTING

Gently raise / lift the cells from the surface with Starlab cell scrapers. Pivoting blades pivot the full 360° around the handle for easy access to flask corners. Flexible ABS handles provide easy handling inside flasks.



Ordering Information & Specifications

			
Article No.	CC7600-0220	CC7600-0250	CC7600-0300
Pack Size	100	100	150
Length	220 mm	250 mm	300 mm
Handle style	Straight	Angled	Straight
Handle material	Flexible ABS	Flexible ABS	Flexible ABS
Blade type	Fixed	Pivoting	Pivoting
Blade size	11 mm	10 mm	20 mm
Blade material	Silicone	Silicone	Polyethylene
For use with	Plates, dishes	Small flasks	Large flasks
Certified	RNase, DNase, DNA & Pyrogen free	RNase, DNase, DNA & Pyrogen free	RNase & DNase free
Gamma sterilised	SAL 10 ⁻⁵	SAL 10 ⁻⁵	SAL 10 ⁻⁶

Note: All cell scrapers are supplied individually-wrapped.

 starlab.click/cellscrapers

Cell Strainers.



Cell Strainers with three different mesh sizes are designed to fit perfectly into 50 ml centrifuge tubes

UNIFORMITY

Starlab's Cell Strainers offer users a simple and reliable way to achieve uniform cell suspensions, essential for applications like stem cell and primary cell isolation or flow cytometry preparation. Available in three color-coded mesh sizes (40 μm , 70 μm and 100 μm), these strainers allow you to select the optimal pore size for your specific sample, ensuring consistent and reproducible results.

These individually wrapped strainers are gamma sterilised to a sterility assurance level of 10^{-6} and certified free from RNase, DNase and pyrogens, so you can trust that your samples remain protected and pure from start to finish—saving you time and giving you peace of mind in sensitive cell work.

KEY FEATURES

- ☑ Uniform nylon mesh size of 40 μm , 70 μm , and 100 μm (colour-coded)
- ☑ Extended lip on the strainer enables aseptic handling with forceps
- ☑ Designed to fit into a 50 ml conical centrifuge tube
- ☑ RNase, DNase and Pyrogen free
- ☑ Gamma sterilised (SAL 10^{-6})
- ☑ Individually wrapped

Description	Pack Size	Article No.
 40 μm Cell Strainer, Blue (Sterile)	50	CC8111-0042
 70 μm Cell Strainer, White (Sterile)	50	CC8111-0072
 100 μm Cell Strainer, Yellow (Sterile)	50	CC8111-0102



starlab.click/cellstrainer

15 ml & 50 ml Centrifuge Tubes.

PROTECT YOUR CELLS. ENHANCE RESULTS.

Starlab's centrifuge tubes are designed to support your most sensitive cell work, giving you confidence in every step of your research. Whether you're spinning down cells, preparing samples, or storing precious materials, these tubes help safeguard cell viability and integrity, thanks to their certified non-toxic, USP Class VI polymers.

Enjoy the highest level of sterility assurance (SAL 10^{-6}), meeting stringent EN 556-1 standards for medical device sterilisation. This means you can trust that your samples remain uncontaminated, which is vital for reproducible results and reliable cell cultures.

Maximum centrifugation rates

15 & 50 ml conical: 12,000 x g

50 ml skirted: 6,000 x g



Extra moulded graduations!

15 ml Conical Tube: 0 – 1.0 ml
50 ml Conical Tube: 0 – 3.0 ml



Tubes shown with rack E2396-1550. Rack for 15 ml tubes also available.

KEY FEATURES

- ✓ Clear polypropylene tubes with HDPE screw caps
- ✓ Clearly marked graduations make measuring effortless
- ✓ Graduated to full 15 ml and 50 ml volumes
- ✓ White writing surface
- ✓ Autoclavable at 121 °C / Freezable to -80 °C
- ✓ Shorter length, 2.5 turn screw caps with sealing ring prevents leaking
- ✓ USP Class VI polymers and certified non-cytotoxicity
- ✓ Sterile (SAL 10^{-6})
- ✓ Heavy metal free
- ✓ Certified RNase, DNase, DNA and Pyrogen free

Description	Pack Size	Art. No.
Conical Tubes		
15 ml Centrifuge Tube, Conical (Sterile), Loose	20 x 25	E1415-0100
15 ml Centrifuge Tube, Conical (Sterile), Racked	20 x 25	E1415-0700
50 ml Centrifuge Tube, Conical (Sterile), Loose	20 x 25	E1450-0100
50 ml Centrifuge Tube, Conical (Sterile), Racked	20 x 25	E1450-0700
Skirted Tubes		
50 ml Centrifuge Tube, Skirted (Sterile), Loose	20 x 25	E1450-0400
Dimensions inc. cap (HxØ): 15 ml: 122.6 x 22 mm. 50 ml: 117 x 34.5 mm. 50 ml skirted: 120 x 34.5 mm.		



15 ml conical



50 ml conical



Racked tubes supplied in easy to recycle cardboard trays



50 ml skirted

Cryogenic Vials.

KEY FEATURES

- ✓ 100% polypropylene tubes
- ✓ supplied in convenient pouches that stand on the bench
- ✓ For storage down to -196 °C; **should only be used in the gas phase of liquid nitrogen**
- ✓ Internal threaded vials have a silicone seal in the cap for the highest possible impermeability
- ✓ White writing area
- ✓ Highly visible black graduations at 100 µl increments
- ✓ Skirted vials lock into racks for easy single-handed work
- ✓ Coloured cap inserts available separately to colour code samples
- ✓ Sterile (SAL 10⁻⁶)
- ✓ Certified RNase, DNase, DNA and Endotoxin free

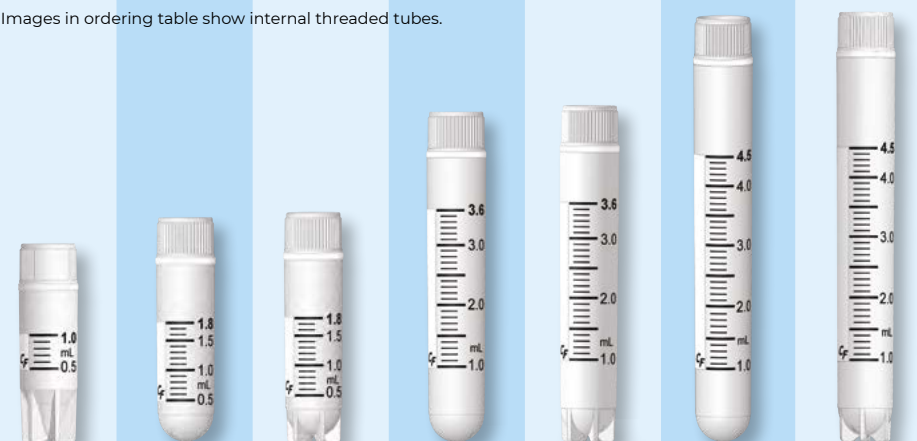


Supplied in convenient, resealable, self-standing pouches

starlab.click/cryovials

Cryogenic Vials

Images in ordering table show internal threaded tubes.



	Volume:	1.0 ml	1.8 ml	1.8 ml	3.6 ml	3.6 ml	4.5 ml	4.5 ml
	Base:	Skirted	Conical	Skirted	Conical	Skirted	Conical	Skirted
	EXTERNAL Threaded Tube Self-Sealing Cap, Sterile	E3090-6212 Pack Size: 10 x 50 Height: 41 mm	E3090-6321 Pack Size: 10 x 50 Height: 47 mm	E3090-6222 Pack Size: 10 x 50 Height: 48 mm	n/a	n/a	n/a	E3090-6242 Pack Size: 6 x 50 Height: 91 mm
	INTERNAL Threaded Tube, Silicone Seal in Cap Sterile	E3110-6112 Pack Size: 10 x 50 Height: 42 mm	E3110-6121 Pack Size: 10 x 50 Height: 46 mm	E3110-6122 Pack Size: 10 x 50 Height: 49 mm	E3110-6131 Pack Size: 8 x 50 Height: 70 mm	E3110-6132 Pack Size: 8 x 50 Height: 71 mm	E3110-6141 Pack Size: 6 x 50 Height: 90 mm	E3110-6142 Pack Size: 6 x 50 Height: 91 mm

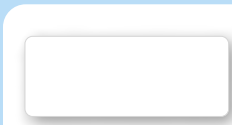
Note: E3090-6321 may not fit all canes due to 13.2mm diameter.

Coloured Cap Inserts



E1494-6001 Blue Pack: 500	E1494-6002 Green Pack: 500	E1494-6003 Orange Pack: 500	E1494-6004 Red Pack: 500	E1494-6104 Pink Pack: 500	E1494-6005 Violet Pack: 500	E1494-6006 Yellow Pack: 500	E1494-6007 Brown Pack: 500	E1494-6108 Grey Pack: 500	E1494-6009 White Pack: 500	E1494-6099 Mixed Pack: 500
--	---	--	---------------------------------------	--	--	--	---	--	---	---

Cryogenic Accessories.



CRYOGENIC LABELS

Pre-cut labels for ultra-low temperature use down to -196 °C. Use on polypropylene, glass, polycarbonate and metal. Labels must be applied to dry, unfrozen sample vials at room temperature.

Label size: 38 x 15 mm.

StarTag Cryo

Art. No: **E9189-3009**
Roll of 1000 labels

starlab.click/labelling



STORAGE CANES

Storage canes for use with 5 x 1.2 / 2.0 ml cryogenic vials.

Storage Canes

Art. No: **E2005-5000**
Pack of 12

starlab.click/storagecanes



CRYOGENIC STORAGE BOXES

Polycarbonate boxes with fixed dividers. Transparent, one-way fit lift-off lid with printed reference grid.

WxDxH: 130 x 130 x 53 mm

81-place box, white

Art. No: **I2381-2305**
Pack of 5

100-place box, white

Art. No: **I2510-5005**
Pack of 5

starlab.click/cryogenicstorage



CRYO LOCK RACKS

50-place polypropylene rack with a 5x10 array for use with skirted cryogenic vials

WxDxH: 200 x 100 x 25 mm

Lock Rack, Blue

Art. No: **E2350-4001**
Pack of 4

Lock Rack, Red

Art. No: **E2350-4004**
Pack of 4

Lock Rack, Violet

Art. No: **E2350-4005**
Pack of 4

starlab.click/lockracks

-80 °C Freezer.



For more info and technical specifications



starlab.click/underbench-freezer

KEY BENEFITS

- ☑ Ideal for your personal -80 °C storage place
- ☑ Temperature range -60 to -86 °C
- ☑ Net volume of 91 litres
- ☑ Reduces heat and noise in your lab
- ☑ Ergonomic handle with lock
- ☑ Two port holes on the side provide flexibility and easy access
- ☑ USB port for temperature logger
- ☑ No filter - maintenance free!
- ☑ 48-hour backup
- ☑ 2-yr warranty

Description

Article No.

Underbench Freezer

N2700-1000

NOTE: Only available for sale in UK



Shelving

The freezer is supplied with two shelves. Stainless steel racking to hold storage boxes (made specifically for this freezer) is also available. See online for details.



T: +49 (0)40 675 99 39 0
info@starlab.de
www.starlab.de



T: +44 (0)1908 283800
info@starlab.co.uk
www.starlab.co.uk



T: +33 (0)1 60 13 71 70
info@starlab.fr
www.starlab.fr



For our international
dealers, please go to
starlab.click/distributors



T: +39 (0)2 7020 1040
info@starlab.it
www.starlab.it



T: +41 56 6645 980
info@starlab.ch
www.starlab.ch



WATCH VIDEO



Cell culture challenges but you continue to grow.
You are passionate for science.

Whether you're advancing research or scaling up production, our cell culture products empower you to achieve reliable, reproducible results with ease. Designed for optimal performance and manufactured to the highest quality standards, you can be sure to outfit your cells for true performance with Starlab cell culture products.

 starlab.click/cellculture