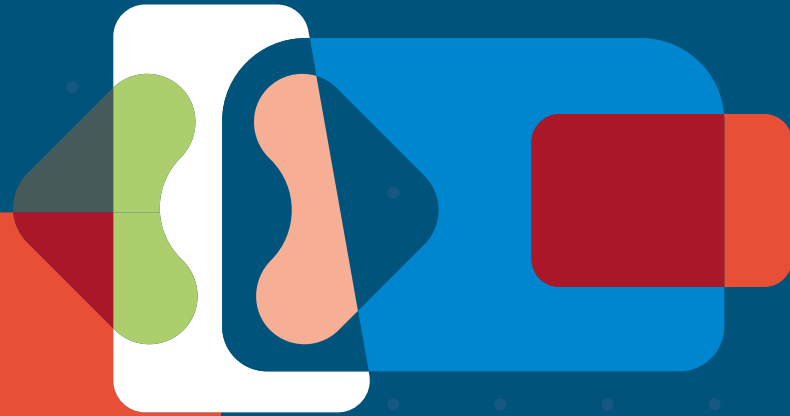


# All-in for your applications. The GuardOne<sup>®</sup> Workstation.

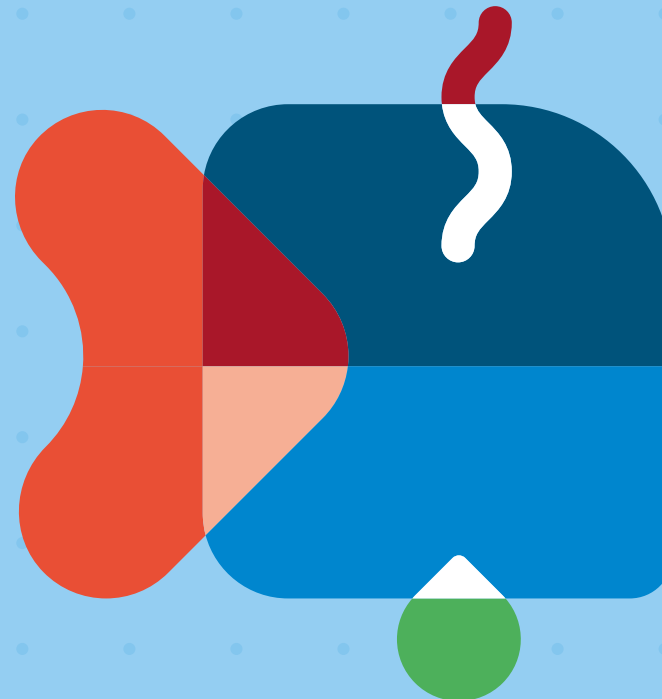


Passionate for science.



- **Product overview.**

- For your applications.
- Environmental care.
- For the nerds: the tech specs.



# Product Overview.

# We went **all-in** on this one. Except for contamination.

## TOP LID

Easy to open for an effortless, one-person filter exchange

## EASY

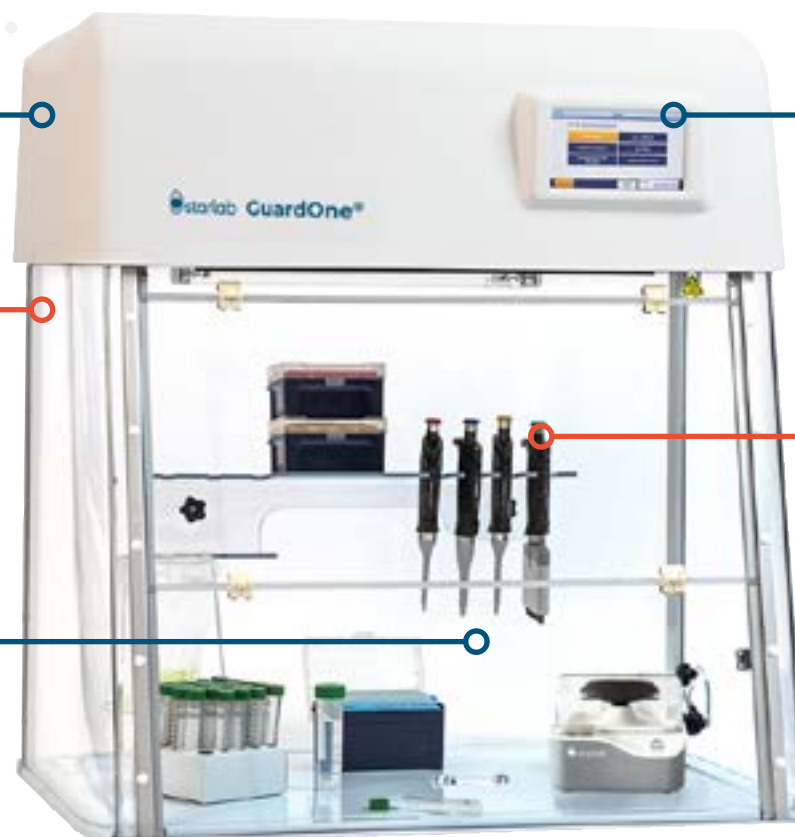
### TO ASSEMBLE

Tool-free assembly in just 15 minutes. No specialist knowledge required

## IDEAL

### WORKSPACE

for sensitive and critical applications requiring a clean environment



## INTUITIVE

### TOUCHSCREEN

Glove compatible. Convenient one-touch QuickStart / QuickStop

## HOLDS

### YOUR GEAR

Integrated shelf and pipette holder

# Safe

- Efficient UV<sub>254 nm</sub> decontamination with timer function
- Automatic UV lamp cut-off when front sash is opened
- Efficient, class H14 HEPA filter with pre-filter\*
- ISO class 5 working environment\*

# Reliable

- UV lamp lifespan surveillance
- HEPA filter lifespan surveillance\*
- Realtime airflow measurement\*
- Device status monitoring

\* Laminar Flow models only



# Easy to use

- Glove compatible touchscreen
- One-touch QuickStart / QuickStop
  - start with your preferred settings for airflow\* speed, light, and light colour (white or red)
- Virtually maintenance free
- Easy to clean

# Smart

- Minimal packaging volume and weight
- Easy, tool-free assembly
- Set up your GuardOne® in just 15 minutes
- Tool-free HEPA filter\* exchange in just 2 minutes

\* Laminar Flow models only



[starlab.click/guardone](https://starlab.click/guardone)

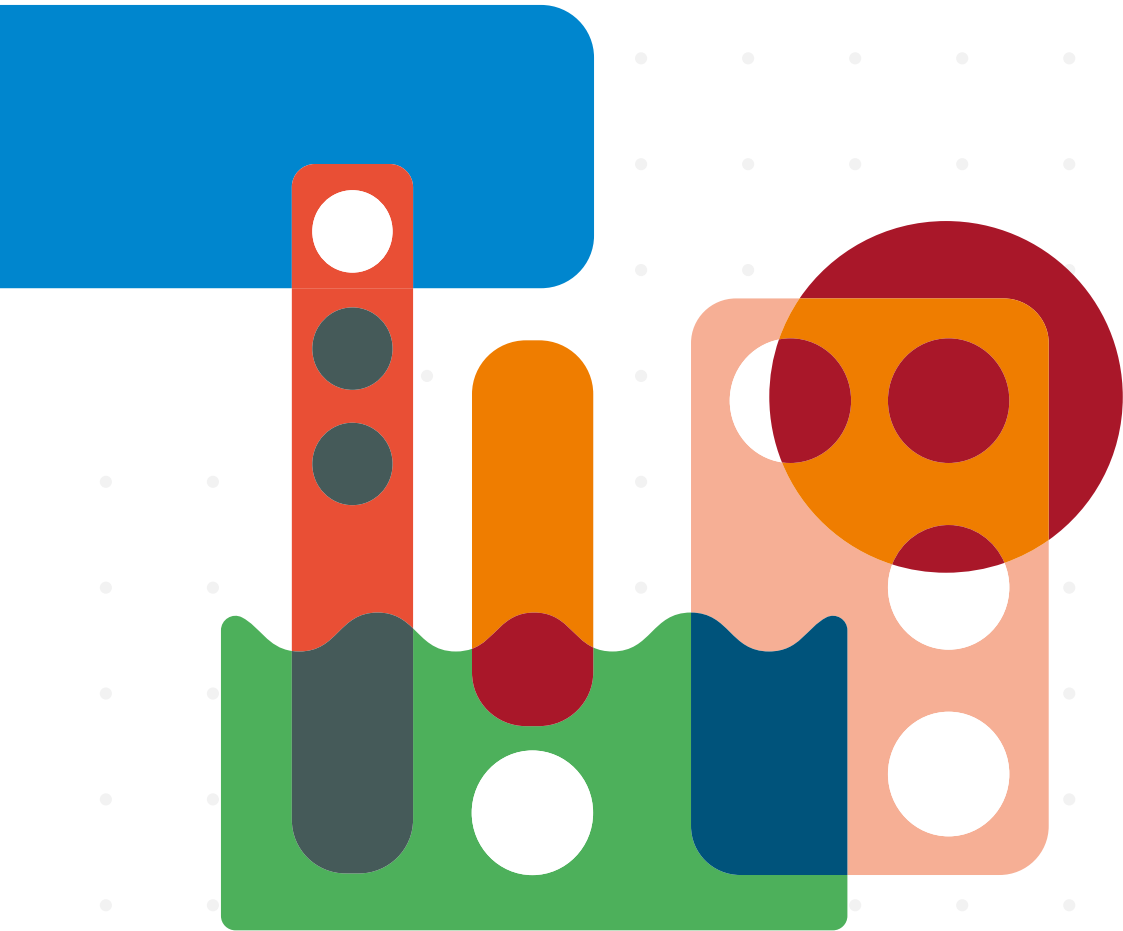


- Product overview.
- **For your applications.**
- Environmental care.
- For the nerds: the tech specs.



# For your applications.

# A perfect fit for your **daily** use.



## **ANY SENSITIVE EXPERIMENTS\* REQUIRING A CONTROLLED, CLEAN ENVIRONMENT**

- Sample preparation of DNA or RNA prior to thermocycling
- Post-PCR techniques
- Binding studies and other incubations
- Cell culture work
- Sterile solution preparations
- (Molecular) plant physiology  
- innovative, red light option for light sensitive experiments!
- Microbiological culture work
- Any sensitive experiments requiring a controlled, clean environment

\*GuardOne® is not designed to protect the operator

# The GuardOne® Workstation: maximum protection, maximum reliability.

## WORK WITH YOUR VALUABLE SAMPLES WITHOUT CROSS-CONTAMINATION

STARLAB's GuardOne® Workstation provides the ideal workspace for sensitive and critical applications requiring a clean environment or protection from potential contamination by bacteria, DNA or RNA. The GuardOne® Workstation minimizes cross-contamination risk to protect your valuable samples and reagents, thus helping to prevent both the time and cost involved by having to duplicate contaminated work.

The GuardOne® UV lamp timer means you can easily decontaminate the working area before you start (or whenever needed), and the two stage filter system creates an ISO 5 cleanroom working environment\* to help improve your results. The adjustable airflow\* allows you to provide the perfect working environment for even the most sensitive of samples.

Every aspect of GuardOne® has been designed with convenience in mind. All functions are controlled via the intuitive and easy to use touchscreen which also features an at-a-glance color-coded workstation status indicator. This, combined with the realtime measurement of the airflow and the constant lifespan monitoring of the UV lamp and HEPA filters\* provides further confidence that your samples are safe. Oh, and there's a convenient built-in lab timer too – we thought of everything!

\* Laminar Flow models only





# Hello darkness, my old friend.

Optically-clear,  
UV-impermeable  
polycarbonate provides excellent  
visibility of the working area as  
well as full protection  
from harmful UV



High performance LED light  
system for perfect working  
conditions.

- Product overview.
- For your applications.
- **Environmental care.**
- For the nerds: the tech specs.



# Environmental care.

# The GuardOne® Workstation was designed with the environment in mind.

## MINIMAL PACKAGING VOLUME

- Innovative design reduces package volume providing a 50% SAVING\* on both space and shipping resources
- Supplied flat-packed in six pieces
- Easy to assemble without the need for tools
- No specialist knowledge needed, assemble in 15 minutes

## REDUCED WASTE

- UV lamp lifespan of up to 9000 hours
- The long lamp life significantly reduces both the cost and waste associated with frequent replacement

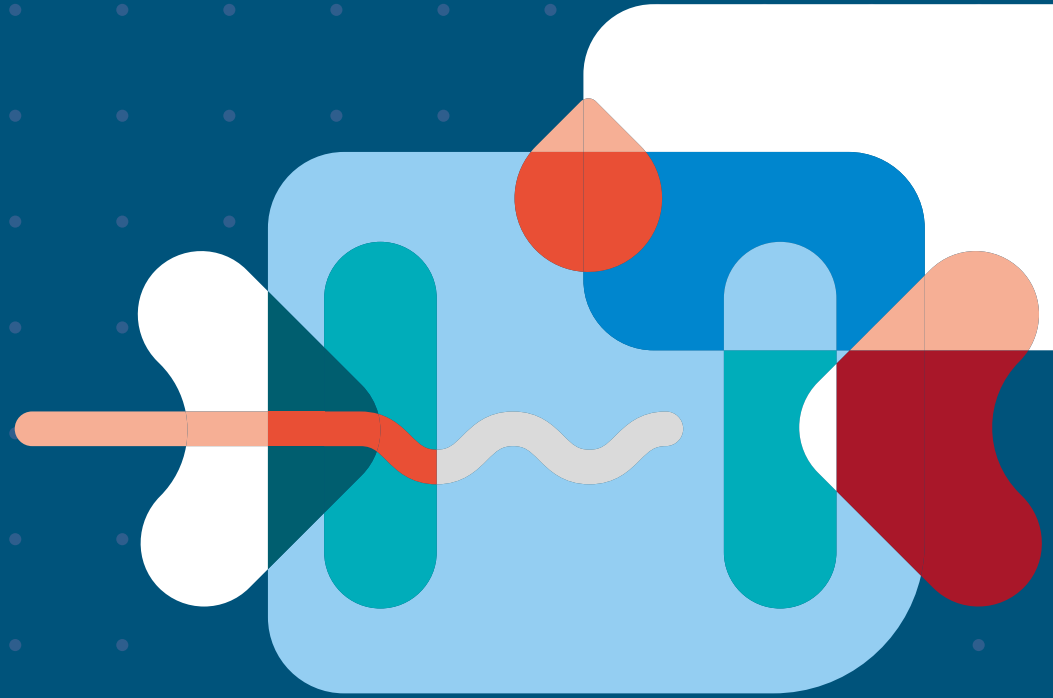
## MINIMAL POWER CONSUMPTION

- Energy-saving LED lighting
- Latest fan technology
- One of the lowest power consumptions available on the market

\*To comparable competitor products



- Product overview.
- For your applications.
- Environmental care.
- **For the nerds: the tech specs.**



# For the nerds: the tech specs.

# Starlab GuardOne® Workstation



Dead Air Workstation 32"



Dead Air Workstation 48"



Laminar Flow Workstation 32"



Laminar Flow Workstation 48"

## BASIC SPECIFICATIONS

|   |                    |                     |                    |                     |
|---|--------------------|---------------------|--------------------|---------------------|
| External dimensions (W x D x H)                   | 813 x 610 x 877 mm | 1220 x 610 x 877 mm | 813 x 610 x 877 mm | 1220 x 610 x 877 mm |
| Internal dimensions (W x D x H)<br>(working area) | 800 x 600 x 600 mm | 1200 x 600 x 600 mm | 800 x 600 x 600 mm | 1200 x 600 x 600 mm |
| Weight  | 32 kg              | 35 kg               | 36 kg              | 42 kg               |
| Power consumption                                 | 38 W               | 38 W                | 90 W               | 160 W               |
| Lab Timer   | Yes                | Yes                 | Yes                | Yes                 |

## AIRFLOW

|                              |   |   |               |               |
|------------------------------|---|---|---------------|---------------|
| Air velocity                 | - | - | 0.2 – 0.4 m/s | 0.2 – 0.4 m/s |
| Realtime airflow measuring   | - | - | Yes           | Yes           |
| Pre-filter                   | - | - | 1x            | 2x            |
| HEPA filter                  | - | - | 1x H14        | 2x H14        |
| HEPA filter lifespan monitor | - | - | yes           | yes           |

## LIGHT

|                          |          |          |          |          |
|--------------------------|----------|----------|----------|----------|
| LED light intensity      | 1400 lux | 1400 lux | 1400 lux | 1400 lux |
| UV lamp                  | 1x 15 W  | 2x 15 W  | 1x 15 W  | 2x 15 W  |
| UV lamp lifespan monitor | Yes      | Yes      | Yes      | Yes      |
| UV timer                 | Yes      | Yes      | Yes      | Yes      |
| UV safety switch         | Yes      | Yes      | Yes      | Yes      |



Cable access point  
for your electrical devices



Easy-open lid with hydraulic struts  
for effortless HEPA filter exchange



High performance,  
energy-saving  
LED lights  
(white and red)

# Order Information



Red LED light for  
light-sensitive  
applications

Optional trolley for workstation  
mobility around the lab

| Description  | Pack Size | Cat. No.   |
|--|-----------|------------|
| <b>GUARDONE® DEAD AIR WORKSTATIONS <sup>1)</sup></b>     |           |            |
| GuardOne® Dead Air 32" (80 cm)                           | 1         | S8040-1000 |
| GuardOne® Dead Air 48" (120 cm)                          | 1         | S8040-1001 |
| <b>GUARDONE® LAMINAR FLOW WORKSTATIONS <sup>2)</sup></b> |           |            |
| GuardOne® Laminar Flow 32" (80 cm)                       | 1         | S8040-0000 |
| GuardOne® Laminar Flow 48" (120 cm)                      | 1         | S8040-0001 |
| <b>ACCESSORIES / REPLACEMENTS</b>                        |           |            |
| HEPA Filter for 32" laminar flow model                   | 1         | S8040-0010 |
| HEPA Filter for 48" laminar flow model                   | 2         | S8040-0011 |
| UV lamp for 32" models                                   | 1         | S8040-0012 |
| UV lamp for 48" models                                   | 2         | S8040-0013 |
| Pre-Filter for 32" & 48" laminar flow models             | 2         | S8040-0014 |
| Shelf with integrated pipette holder for 32" models      | 1         | S8040-0015 |
| Shelf with integrated pipette holder for 48" models      | 1         | S8040-0016 |
| Trolley for 32" models                                   | 1         | S8040-0017 |
| Trolley for 48" models                                   | 1         | S8040-0018 |

1) incl. UV-lamp and shelf

2) incl. Pre-filter, HEPA filter, UV-lamp and shelf



T: +49 (0)40 675 99 39 0  
info@starlab.de  
**www.starlab.de**



T: +44 (0)1908 283800  
info@starlab.co.uk  
**www.starlab.co.uk**



T: +33 (0)1 60 13 71 70  
info@starlab.fr  
**www.starlab.fr**



For our international  
dealers, please go to  
starlab.click/**distributors**



T: +39 (0)2 7020 1040  
info@starlab.it  
**www.starlab.it**



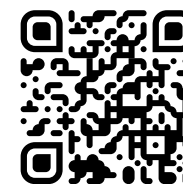
T: +41 56 6645 980  
info@starlab.ch  
**www.starlab.ch**



## WORK WITH YOUR VALUABLE SAMPLES WITHOUT CROSS-CONTAMINATION

STARLAB's GuardOne® Workstation provides the ideal workspace for sensitive and critical applications requiring a clean environment, or protection from potential contaminations by bacteria, DNA or RNA.

GuardOne® will minimize cross-contamination risk and protect your valuable samples and reagents, and save you both the time and cost of having to duplicate your work.



 [starlab.click/guardone](https://starlab.click/guardone)

[WATCH VIDEO](#)