

# Brady® just got better.

DISCOVER THE M210-LAB PRINTER UPGRADE!

**SAME LOOK. SAME ORDERING CODE.**

**SAME LABEL CARTRIDGES.**

**MORE FEATURES!**

But this is just the Brady BMP™ 21-LAB printer with a new name, right? Wrong! The M210-LAB printer is as versatile, durable and portable as the printer it replaces, but with the following upgraded features:

## **NEW FEATURES**

- 133 symbols now available. Alongside Greek, the new printer also features Arrows, Warning Signs and miscellaneous symbols
- Extended barcoding: Code 128, Code 39, Data Matrix, QR codes
- Extended daily use of 100 labels per day



[www.starlab.click/brady](http://www.starlab.click/brady)



Passionate for science.

 starlab

# Brady® M210-LAB label printer.

## TOUGH, PORTABLE PRINTING

The Brady® M210-LAB portable printer has a tough exterior and smart printing capabilities. High quality label materials designed specifically for the laboratory environment create durable, professional looking labels for your samples.

## PRINTER FEATURES

- 133 symbols: Greek, arrows, warning signs, miscellaneous symbols
- Automated serialisation
- Time and date stamp
- Barcoding options: Code 128, Code 39, Data Matrix, QR codes
- Create labels easily with on-board label design wizards
- Save up to 12 label styles for future use
- Auto label function cuts label according to vial size
- Auto shut-off saves battery life

### PRINTER ORDERING INFORMATION

Description	Article No.
Brady® M210-LAB Blister Pack	N3000-2000
Accessories	
Brady® M210-LAB AC Adapter, 220V (3-pin UK plug)	N3000-2001
Brady® M210-LAB AC Adapter, 220V (2-pin Euro plug)	N3000-2002

Blister Pack comprises: Printer, Quick Start Guide and one N5127-7425 label cartridge ready installed. The M210-LAB printer runs on either 6 x AA batteries (not included) or mains via AC power adapter (available separately). 2-year warranty.



## EASY LOAD LABEL CARTRIDGES

Uses the same label cartridges as the previous model (BMPTM-21-LAB)



 [www.starlab.click/brady](http://www.starlab.click/brady)

# Brady® label cartridges.

## PRINTER SPECIFICATIONS

Print method	Thermal Transfer (Durable, Non-Smearing)
Print resolution (dpi)	203 dpi
Print speed	10 mm per second
Colour capability	Monocolour
Label type	Continuous and Die Cut
Max. label width	19 mm
Max. print length	914 mm
Symbols	Greek. Arrows. Miscellaneous. Warning
Display	Three line LCD
Max. Labels per day	100
Barcoding	Code 128. Code 39. Data Matrix. QR Code
Keyboard	ABC
Memory	Stores 12 files
Power Source	6 x AA Batteries (not included) or optional AC Adaptor
Battery life	AA batteries: ~1800 x 2.5 cm long labels
Weight	0.7 kg
Dimensions (WxH)	115 x 241 mm

## LABELS TO TAKE ON THE TOUGHEST LAB LABELLING NEEDS

Continuous labels for the Brady M210-LAB Label Printer. Tape and ribbon are in one cartridge and are easy and quick to load. Starlab sells five different label materials to cover a wide range of application needs, and to take on the toughest laboratory labelling jobs.

## LABEL MATERIAL SPECIFICATIONS

### B-595 Vinyl

Durable and flexible, with permanent acrylic pressure-sensitive adhesive that can be applied at cold temperatures (to -18 °C). Sticks to irregular, rough and curved surfaces. Good chemical resistance. Gloss finish.

- Freezer (-40 °C)
- General lab identification (equipment, shelves etc)

### B-461 Polyester

Ultra-thin to prevent vials jamming in centrifuge or racks. Good solvent resistance. Smudge resistant. Stays put even in the harshest of conditions. For use on smooth surfaces. Matt finish.

- Freezer (-80 °C)
- Liquid nitrogen<sup>1)</sup> (-196 °C)
- Hot water bath (100 °C)
- Autoclave (121 °C)

### B-488 Polyester

Permanent adhesion, outstanding chemical resistance (DMSO, ethanol and short term xylene exposure) and write-on capabilities, this material performs in the very harshest lab environments. For use on smooth surfaces. Matt finish.

- Freezer (-80 °C)
- Autoclave (121 °C)
- Heat resistant (to 160 °C)

### B-499 Nylon

Ideal for general purpose labelling, the permanent adhesive and thicker construction makes this material durable yet easy to handle. Good chemical resistance. Use on smooth or textured/rough surfaces. Matt finish.

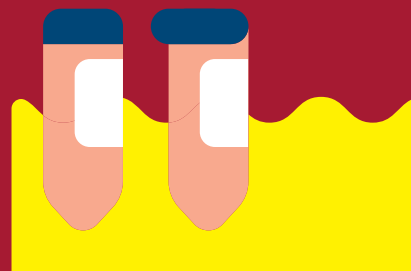
- Liquid nitrogen (-196 °C) (not on glass)
- Freezer (-80 °C)
- Autoclave (121 °C)

### B-7425 Polypropylene

Resistant to extremely low and high temperatures and will even withstand a transfer from liquid nitrogen to boiling water. Permanent acrylic adhesive. For use on smooth surfaces. Matt finish.

- Liquid nitrogen<sup>1)</sup> (-196 °C) (not on glass)
- Freezer (-80 °C)
- Hot water bath (100 °C)
- Autoclave (121 °C)

<sup>1)</sup> Acceptable for use in liquid nitrogen only if the ends of the label overlap.



# Label ordering information.



## CARTRIDGES FOR BRADY® M210-LAB & BMP™ 21 LABEL PRINTERS

### ORDERING INFORMATION

Article No.	Material	Colour	Height	Length
N3795-4391	B-595 Vinyl	Blue	9.5 mm	6.4 m
N3795-4392	B-595 Vinyl	Green	9.5 mm	6.4 m
N3795-4393	B-595 Vinyl	Orange	9.5 mm	6.4 m
N3795-4394	B-595 Vinyl	Red	9.5 mm	6.4 m
N3795-4396	B-595 Vinyl	Yellow	9.5 mm	6.4 m
N3795-4399	B-595 Vinyl	White	9.5 mm	6.4 m
N3795-4619	B-461 Polyester	White	9.5 mm	6.4 m
N5127-4619	B-461 Polyester	White	12.7 mm	6.4 m
N7519-4619	B-461 Polyester	White	19.0 mm	6.4 m
N3795-4889	B-488 Polyester	White	9.5 mm	6.4 m
N5127-4889	B-488 Polyester	White	12.7 mm	6.4 m
N7519-4889	B-488 Polyester	White	19.1 mm	6.4 m
N3795-4999	B-499 Nylon	White	9.5 mm	4.8 m
N5127-4999	B-499 Nylon	White	12.7 mm	4.8 m
N7519-4999	B-499 Nylon	White	19.0 mm	4.8 m
N3795-7425	B-7425 Polypropylene	White	9.5 mm	6.4 m
N5127-7425	B-7425 Polypropylene	White	12.7 mm	6.4 m
N7515-7425	B-7425 Polypropylene	White	19.0 mm	6.4 m



[www.starlab.click/brady](http://www.starlab.click/brady)

### LABEL APPLICATIONS

Freezer (-40 °C)	Freezer (-80 °C)	Liquid Nitrogen <sup>2)</sup> (-196 °C)	Autoclave (121 °C)	Hot Water Baths (100 °C)	Low-Profile (extremely thin)	Barcoding	For vials	For slides	For plates	General use
☑							0.5 ml		☑	☑
☑							0.5 ml		☑	☑
☑							0.5 ml		☑	☑
☑							0.5 ml		☑	☑
☑							0.5 ml		☑	☑
☑							0.5 ml		☑	☑
☑	☑	☑	☑	☑	☑		0.5 ml		☑	☑
☑	☑	☑	☑	☑	☑		1.5 ml		☑	☑
☑	☑	☑	☑	☑	☑	☑	2.0 – 50 ml		☑	☑
☑	☑		☑				0.5 ml	☑	☑	☑
☑	☑		☑				1.5 ml	☑	☑	☑
☑	☑		☑			☑	2.0 – 50 ml	☑	☑	☑
☑	☑	☑	☑				0.5 ml	☑	☑	☑
☑	☑	☑	☑				1.5 ml	☑	☑	☑
☑	☑	☑	☑	☑		☑	2.0 – 50 ml	☑	☑	☑

<sup>2)</sup> Acceptable for use in liquid nitrogen only if the ends of the label overlap.

