

Distel Dosing System.

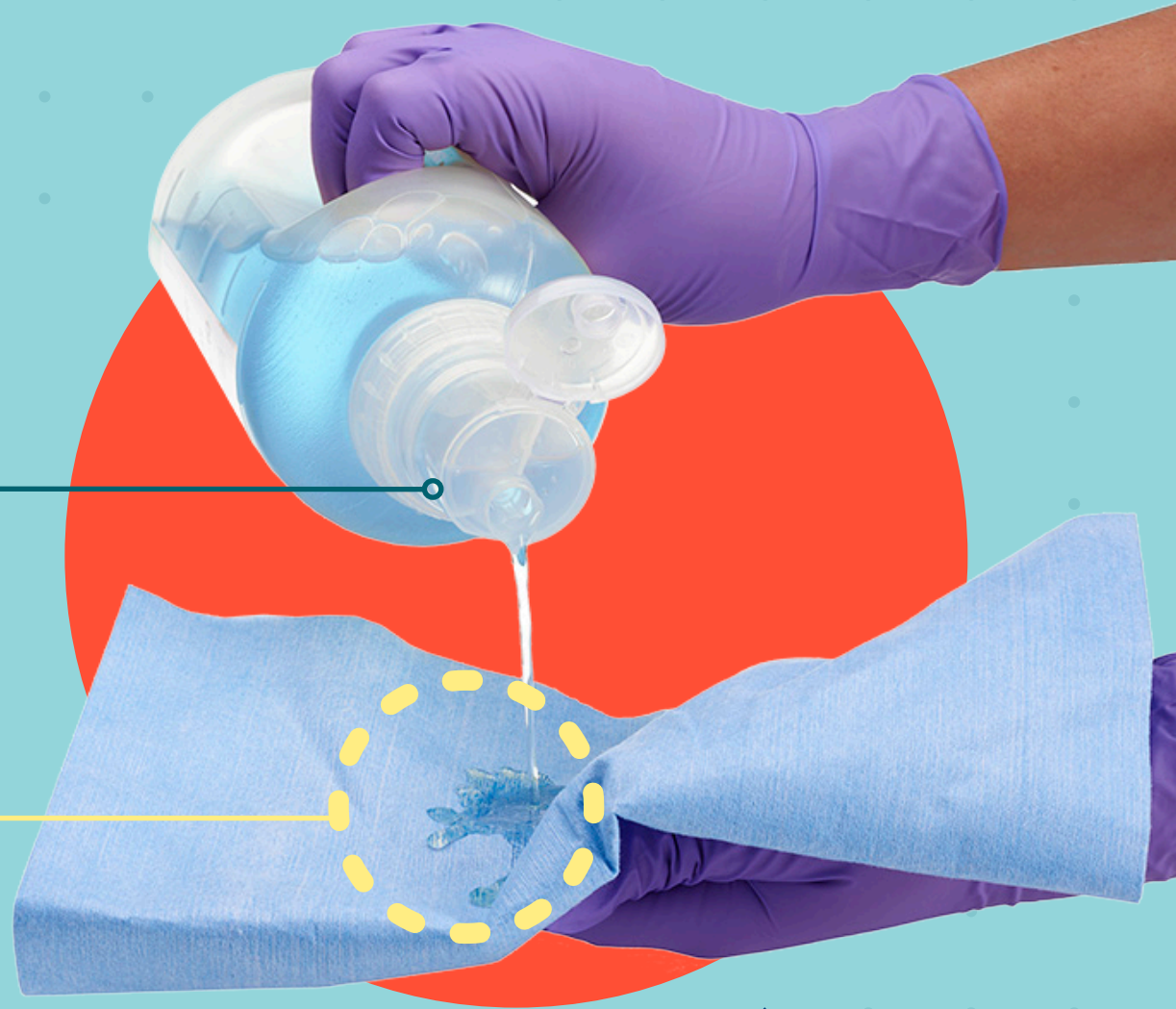
EFFECTIVE AGAINST CORONAVIRUS IN 3 MINUTES*

DOSING HEAD

Fed up with the partially dry, pre-loaded wipes at the bottom of the pack? The Dosing Head controls the amount of disinfectant, providing a consistent 5.0 ml dose every time

REPLACE PLASTIC WIPES

Use with any reusable cloth or paper towel



*Distel DS has been tested in accordance with German regulatory norm of DVV/RKI for enveloped viruses, which is the equivalent of the virucidal norm EN 14476. Organisms are chosen by scientists for testing under this regulatory standard as they are representative of the most resistant enveloped viruses in the medical area. These viruses are Bovine Viral Diarrhea Virus (Surrogate for Hepatitis C) and Modified Vaccinia Virus Ankara. Efficacy against these viruses and compliance with this standard infers efficacy against all enveloped viruses only, which includes SARS-Cov-2, the virus responsible for the current COVID-19 pandemic.

Distel Dosing System.

THE NEW-STYLE DISINFECTANT SYSTEM TO REPLACE PLASTIC WIPES

Distel DS is a convenient and easy to use disinfectant system for the cleaning and disinfection of hard surfaces and non-invasive medical devices. Simply dilute 1 litre of concentrate with tap water to make 10 litres of disinfectant that is effective against bacteria, yeast and viruses in just 3 minutes!

The clever dosing head ensures a consistent 5.0 ml dose of disinfectant every time. A starter pack is available that contains all you need to get going; then you can purchase the 1 L concentrate on its own to keep you going. Eliminate single-use plastic wipes now with Distel DS – just dilute, dose, and wipe using the towel or cloth of your choice.

PRODUCT FEATURES:

- Effective against bacteria, yeast and viruses
- PHMB-free formulation
- 1 L of concentrate provides 2000 x 5.0 ml doses
- Volume markers on bottles aid quick and easy dilution
- Dosing heads provide consistent dosage, every time
- Save plastic waste! Reuse the bottles again and again



GOOD TO KNOW!

- Effective against bacteria, yeast & viruses
- Destroys RNA and DNA
- Effective against Coronaviruses in 3 minutes*
- 2000 x 5.0 ml doses from 1 L concentrate



1 L DISTEL DS STARTER PACK	1 L DISTEL DS CONCENTRATE
<ul style="list-style-type: none">● 1 x 1 L Bottle Distel DS Concentrate● 5 x 1 L Empty Reusable Dosing Bottles● 6 x 5.0 ml Dosing Heads● 1 x Working Solution Bottle Label	<ul style="list-style-type: none">● 1 x 1 L Bottle Distel DS Concentrate● 1 x 5.0 ml Dosing Head● 1 x Working Solution Bottle Label
CAT NO. & LIST £**	CAT NO. & LIST £**
CCH050101 £141.75	CCH050201 £114.45

**Prices exclude VAT and valid to 31-Dec-21. Available in the UK only.

Microbiological efficacy summary.

	ORGANISM	TEST NORM	TEST TYPE	CONDITIONS	CONTACT TIME
VIRUSES	Bovine Viral Diarrhoea Virus (surrogate of Hepatitis C Virus)	DVV and RKI	Suspension	Dirty ¹⁾	3 mins
	Modified Vaccinia Virus Ankara				
FUNGI / YEAST	<i>Candida albicans</i>	EN 13624	Suspension	Clean ²⁾	3 mins
BACTERIA	<i>Staphylococcus aureus</i>	EN 137272	Suspension	Clean ²⁾	3 mins
	<i>Pseudomonas aeruginosa</i>				
	<i>Enterococcus hirae</i>				
	Carbapenem-resistant Enterobacteriaceae (CRE) <i>Klebsiella pneumoniae</i>				
	Vancomycin-resistant Enterococci (VRE) <i>Enterococcus faecium</i>				
	<i>Escherichia coli</i>				
	Methicillin-resistant <i>Staphylococcus aureus</i> (MRSA)				
Multi-drug resistant <i>Acinetobacter baumannii</i> (MDRAB)					
TEST METHOD					
RNA/DNA	Spectrophotometric and fluorometric				

Dirty ¹⁾ Testing performed in the presence of 10% foetal calf serum. Clean ²⁾ Testing performed in the presence of 0.3g/L bovine albumin. A new wipe/cloth should be used for each area/object. User Guide Instructions are provided; always follow instructions for use.

SET YOURSELF UP WITH THE STARTER PACK:



1.

1. Fill an empty dosing bottle with 100 ml of the concentrate (up to the first volume marker on the bottle)



2.

2. Top up with 900 ml of ambient tap water (until the solution reaches the top volume marker on the bottle)



3.

3. Attach a 5.0 ml dosing cap to the bottle of diluted solution



4.

4. Invert the bottle to fill the dosing cap with 5.0 ml solution



5.

5. Pour solution directly onto the surface, or onto a wipe/ cloth of your choice to fully saturate



6.

6. Wipe the surface and observe the 3 minute minimum contact time