



1,000 µl graduated TipOne® Tip, Blue, Racks (sterile)



Product Highlights

- Graduated at 250 µl, 500 µl and 1000 µl
- Universal tip fit
- High quality virgin polypropylene tips, with extremely smooth surfaces for reduced sample retention
- Sterile and certified RNase, DNase, DNA and Pyrogen free
- Racks can be retained and reused with TipOne® refills
- Rack base made with ~25 % recycled plastic
- All components, excluding tips and shrink wrap, are recyclable

Product Applications

Pipetting liquids

Dispensing liquids

Mixing liquids

Filling plates and reaction vessels

Phase extraction and removal of supernatants

STARLAB reserves the right to make changes at any time and without prior notice. The content and design of this PDF are protected by national and international copyright law and are the property of STARLAB International GmbH. Any duplication, editing, distribution and any kind of use and utilization of this PDF content in electronic systems, online media and / or libraries or similar databases requires the prior consent of STARLAB International GmbH.

Starlab (UK) LTD
5 Tanners Drive
MK14 5BU Milton Keynes
Email: info@starlab.co.uk



General Data

Art. No.	S1111-6811
Pack Size	960 Tips (10 Racks × 96 Tips)
Color Code Wafer	Blue
Sterile	Yes
Autoclavable	Yes
Filter tip	Non-filter
Volume range	100 - 1,000 µl
Volume	1000 µl
Tip Type	standard
Material	Polypropylene
Graduations	Yes
Color	Blue
Sustainability attributes	Racks can be reused with TipOne® refills. Rack base made with ~25 % recycled plastic. All components, excluding tips and shrink wrap, are recyclable.
For use with	Abimed : BioPette-E, Discovery Comfort, LABMATE Optima Biohit : ePet, mLine, Proline BRAND : Transferpette, Transferpette Electronic, Transferpette Pro, Transferpette S Capp : CappAero Comfort, CappAero Universal, Capptronic Single, ecopipette, Singlechannel Eppendorf : Reference, Reference 2, Research, Research plus, Research pro, Xplorer Gilson : Pipetman L, Pipetman Neo, Pipetman P, Pipetman Ultra Hamilton : SoftGrip Pipette, SofTouch HTL : Clinipet+, Discovery Comfort, Discovery Pro, Labmate Pro, Optipette Nichiryo : 31N, 50F, 50V, NLE, NPLO, NPX Rainin : Classic, EDP1, EDP-3 Plus, Pipet-Lite, Pipet-Plus Sartorius : ePet, mLine, Proline, Proline Plus, Tacta Socorex : Acura 815 manual, Acura 825, Acura electro 925 STARLAB : ErgoOne, ErgoOne E, MicroOne, StarPet, StarPet-E Thermo Fisher Scientific Inc. : Finn Focus, Finnpipette Digital, Finnpipette F1/F2, Finnpipette Novus

STARLAB reserves the right to make changes at any time and without prior notice. The content and design of this PDF are protected by national and international copyright law and are the property of STARLAB International GmbH. Any duplication, editing, distribution and any kind of use and utilization of this PDF content in electronic systems, online media and / or libraries or similar databases requires the prior consent of STARLAB International GmbH.

Starlab (UK) LTD
5 Tanners Drive
MK14 5BU Milton Keynes
Email: info@starlab.co.uk



STARLAB reserves the right to make changes at any time and without prior notice. The content and design of this PDF are protected by national and international copyright law and are the property of STARLAB International GmbH. Any duplication, editing, distribution and any kind of use and utilization of this PDF content in electronic systems, online media and / or libraries or similar databases requires the prior consent of STARLAB International GmbH.

Starlab (UK) LTD
5 Tanners Drive
MK14 5BU Milton Keynes
Email: info@starlab.co.uk



More informations about 1,000 µl graduated TipOne® Tip, Blue, Racks (sterile)

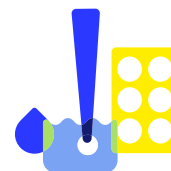
High quality, reliable pipette tips with a universal tip fit – TipOne® has it all! If you are looking for a sustainable pipette tip system with accuracy and precision you can trust, TipOne® is the one tip for you.

Sterile TipOne® tips are validated according to EN ISO 11137-2:2007.













Join our journey to sustainable pipetting

TipOne® tip racks are built to last. When you have used your tips, the rack can be reused again and again with the cost-effective TipOne® refills (sterile and non-sterile options available). TipOne® racks have been tested and they can withstand at least 100 autoclave cycles (rack with wafer inside) without damage.

The base of the rack is made with ~25 % recycled plastic. All components, excluding tips and shrink wrap, are recyclable. Sign up for our TipOne® recycling service!

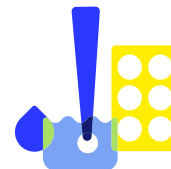






All Variations

PRODUCT NAME	PACKAGING SIZE	ART. NO.
 1,000 µl graduated TipOne® Tip, Blue, Racks (non-sterile) Sterile: No Pack Size: 960 Tips (10 Racks × 96 Tips)  Create PDF Data Sheet	960 Tips (10 Racks × 96 Tips)	S1111-6801
 1,000 µl graduated TipOne® Tip, Blue, Racks (non-sterile), Case Sterile: No Pack Size: 3,840 Tips (40 Racks × 96 Tips)  Create PDF Data Sheet	3,840 Tips (40 Racks × 96 Tips)	S1111-6801-C
 1,000 µl graduated TipOne® Tip, Blue, Racks (sterile) Sterile: Yes Pack Size: 960 Tips (10 Racks × 96 Tips)  Create PDF Data Sheet	960 Tips (10 Racks × 96 Tips)	S1111-6811
 1,000 µl graduated TipOne® Tip, Blue, Racks (sterile), Case Sterile: Yes Pack Size: 3,840 Tips (40 Racks × 96 Tips)  Create PDF Data Sheet	3,840 Tips (40 Racks × 96 Tips)	S1111-6811-C
 1,000 µl graduated TipOne® Tip, Blue, Refills (non-sterile) Sterile: No Pack Size: 960 Tips (10 Refills × 96 Tips)  Create PDF Data Sheet	960 Tips (10 Refills × 96 Tips)	S1111-6701
 1,000 µl graduated TipOne® Tip, Blue, Refills (non-sterile), Case Sterile: No Pack Size: 9,600 Tips (100 Refills × 96 Tips)  Create PDF Data Sheet	9,600 Tips (100 Refills × 96 Tips)	S1111-6701-C

STARLAB reserves the right to make changes at any time and without prior notice. The content and design of this PDF are protected by national and international copyright law and are the property of STARLAB International GmbH. Any duplication, editing, distribution and any kind of use and utilization of this PDF content in electronic systems, online media and / or libraries or similar databases requires the prior consent of STARLAB International GmbH.

Starlab (UK) LTD
5 Tanners Drive
MK14 5BU Milton Keynes
Email: info@starlab.co.uk



PRODUCT NAME	PACKAGING SIZE	ART. NO.
 1,000 µl graduated TipOne® Tip, Blue, Bag (non-sterile) Sterile: No Pack Size: 1,000 Tips (1 Bag × 1000 Tips)  Create PDF Data Sheet	1,000 Tips (1 Bag × 1000 Tips)	S1111-6001
 1,000 µl graduated TipOne® Tip, Blue, Bags (non-sterile), Case Sterile: No Pack Size: 20,000 Tips (20 Bags × 1000 Tips)  Create PDF Data Sheet	20,000 Tips (20 Bags × 1000 Tips)	S1111-6001-C

STARLAB reserves the right to make changes at any time and without prior notice. The content and design of this PDF are protected by national and international copyright law and are the property of STARLAB International GmbH. Any duplication, editing, distribution and any kind of use and utilization of this PDF content in electronic systems, online media and / or libraries or similar databases requires the prior consent of STARLAB International GmbH.

Starlab (UK) LTD
5 Tanners Drive
MK14 5BU Milton Keynes
Email: info@starlab.co.uk