



## 96-Well PCR Plate, Semi-Skirted, Straight Edges, white



### Product Highlights

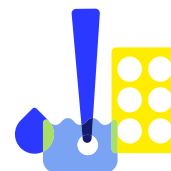
- Approximate maximum capacity for all 96-well plates is 350  $\mu$ l for standard height plates, or 200  $\mu$ l for low-profile plates
- Available as natural, white or black plates. White plates are ideal for qPCR, giving optimal signal-to-noise ratio for fluorescent based assays. Black plates help to minimize light diffusion.
- Specialist plates (for FAST<sup>®</sup> Systems, qPCR)

## Product Applications

PCR

STARLAB reserves the right to make changes at any time and without prior notice. The content and design of this PDF are protected by national and international copyright law and are the property of STARLAB International GmbH. Any duplication, editing, distribution and any kind of use and utilization of this PDF content in electronic systems, online media and / or libraries or similar databases requires the prior consent of STARLAB International GmbH.

**Starlab (UK) LTD**  
5 Tanners Drive  
MK14 5BU Milton Keynes  
Email: [infoline@starlab.co.uk](mailto:infoline@starlab.co.uk)



## General Data

Art. No.	I1402-9809
Pack Size	10 Plates (1 Box × 10 Plates)
Sterile	No
Autoclavable	Yes
Volume	350 µl
Number of wells	96 wells
Material	Polypropylene
DNA free	Yes
DNase free	Yes
Free of endotoxins	Yes
Free of heavy metals	Yes
PCR inhibitor free	Yes
Pyrogen free	Yes
RNase free	Yes
Color	White
Cut corner	A12
Elevated wells	no
Frame Design	Semi-skirted
Matrix	Printed
Profile	Standard height, straight edges
Raised rim	no
Suitable for PCR	yes

STARLAB reserves the right to make changes at any time and without prior notice. The content and design of this PDF are protected by national and international copyright law and are the property of STARLAB International GmbH. Any duplication, editing, distribution and any kind of use and utilization of this PDF content in electronic systems, online media and / or libraries or similar databases requires the prior consent of STARLAB International GmbH.

**Starlab (UK) LTD**  
5 Tanners Drive  
MK14 5BU Milton Keynes  
Email: [infoline@starlab.co.uk](mailto:infoline@starlab.co.uk)



Suitable for Real-Time PCR (qPCR)	yes
-----------------------------------	-----

STARLAB reserves the right to make changes at any time and without prior notice. The content and design of this PDF are protected by national and international copyright law and are the property of STARLAB International GmbH. Any duplication, editing, distribution and any kind of use and utilization of this PDF content in electronic systems, online media and / or libraries or similar databases requires the prior consent of STARLAB International GmbH.

**Starlab (UK) LTD**  
5 Tanners Drive  
MK14 5BU Milton Keynes  
Email: [infoline@starlab.co.uk](mailto:infoline@starlab.co.uk)



## More informations about 96-Well PCR Plate, Semi-Skirted, Straight Edges, white

Starlab Semi-Skirted PCR Plates feature a 7 mm high skirt around the complete plate edge.

The skirt improves the stability of the plate and makes them more suited e. g. for automated applications. Furthermore a labelling on the plate edge e. g. by barcode-labels is possible. Plates with elevated wells reduce the contamination risk by cross-contamination.








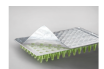
- > Autoclavable
- > Supplied in resealable bags
- > Convenient small pack sizes
- > Certified RNase, DNase, DNA and Pyrogen free
- > PCR Inhibitor free

STARLAB reserves the right to make changes at any time and without prior notice. The content and design of this PDF are protected by national and international copyright law and are the property of STARLAB International GmbH. Any duplication, editing, distribution and any kind of use and utilization of this PDF content in electronic systems, online media and / or libraries or similar databases requires the prior consent of STARLAB International GmbH.

**Starlab (UK) LTD**  
5 Tanners Drive  
MK14 5BU Milton Keynes  
Email: [info@starlab.co.uk](mailto:info@starlab.co.uk)



## Accessories

PRODUCT NAME	PACKAGING SIZE	ART. NO.
 <a href="#">Silicone Sealing Mat for 96-Well PCR Plate</a>	5 Pcs. (1 Box × 5 Pcs.)	E1403-0000
 <a href="#">Aluminium StarSeal (PCR)</a>	100 Pcs. (1 Box × 100 Pcs.)	E2796-9792
 <a href="#">Aluminium Sealing Film, 60 µm (PCR)</a>	100 Pcs. (1 Box × 100 Pcs.)	E2796-0792
 <a href="#">Clear Polyolefin StarSeal (PCR)</a>	100 Pcs. (1 Box × 100 Pcs.)	E2796-9793
 <a href="#">Clear Polypropylene Seal (PCR)</a>	100 Pcs. (1 Box × 100 Pcs.)	E2796-0793
 <a href="#">Xtra-Clear Advanced Polyolefin StarSeal (qPCR)</a>	100 Pcs. (1 Box × 100 Pcs.)	E2796-9795
 <a href="#">Polyester PCR Sealing Film, Clear</a>	100 Pcs. (1 Box × 100 Pcs.)	E2796-0100
 <a href="#">Polypropylene PCR Sealing Film Strips, Clear</a>	200 Pcs. (1 Box × 200 Pcs.)	E2796-2850
 <a href="#">Self-adhesive sealing films &amp; foils for PCR</a>	100 Pcs. (1 Box × 100 Pcs.)	E2796-1270

STARLAB reserves the right to make changes at any time and without prior notice. The content and design of this PDF are protected by national and international copyright law and are the property of STARLAB International GmbH. Any duplication, editing, distribution and any kind of use and utilization of this PDF content in electronic systems, online media and / or libraries or similar databases requires the prior consent of STARLAB International GmbH.

**Starlab (UK) LTD**  
5 Tanners Drive  
MK14 5BU Milton Keynes  
Email: [infoline@starlab.co.uk](mailto:infoline@starlab.co.uk)