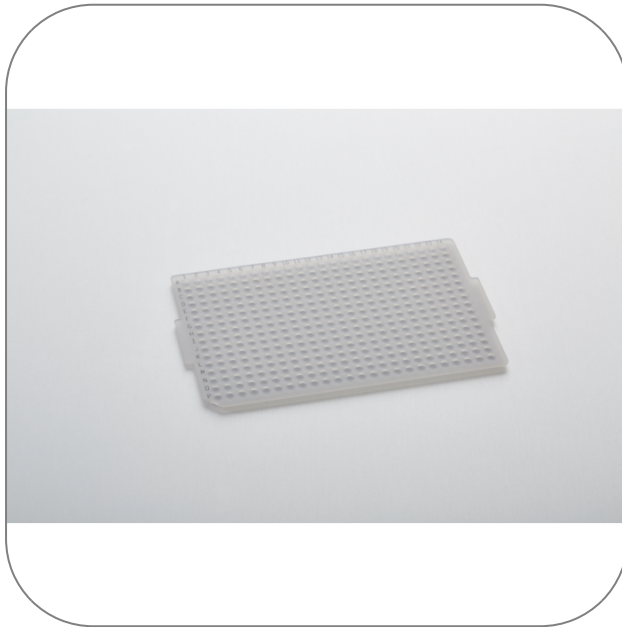




Silicone Sealing Mat for 384-Well Plates



Product Highlights

- Autoclavable
- Certified RNase, DNase, DNA and PCR Inhibitor free
- Endotoxin free

Product Applications

PCR

Sample storage and preparation

STARLAB reserves the right to make changes at any time and without prior notice. The content and design of this PDF are protected by national and international copyright law and are the property of STARLAB International GmbH. Any duplication, editing, distribution and any kind of use and utilization of this PDF content in electronic systems, online media and / or libraries or similar databases requires the prior consent of STARLAB International GmbH.

Starlab (UK) LTD
5 Tanners Drive
MK14 5BU Milton Keynes
Email: info@starlab.co.uk



General Data

Art. No.	E1042-2350
Autoclavable	Yes
Pack Size	10 Pcs. (1 Box × 10 Pcs.)
Number of wells	384 wells
Material	Silicone
DNA free	Yes
DNase free	Yes
Free of endotoxins	Yes
PCR inhibitor free	Yes
Pyrogen free	Yes
RNase free	Yes
Color	Natural
Suitable for PCR	yes
Suitable for Real-Time PCR (qPCR)	no

STARLAB reserves the right to make changes at any time and without prior notice. The content and design of this PDF are protected by national and international copyright law and are the property of STARLAB International GmbH. Any duplication, editing, distribution and any kind of use and utilization of this PDF content in electronic systems, online media and / or libraries or similar databases requires the prior consent of STARLAB International GmbH.

Starlab (UK) LTD
5 Tanners Drive
MK14 5BU Milton Keynes
Email: infoline@starlab.co.uk



More informations about Silicone Sealing Mat for 384-Well Plates

Reusable, ultra-flexible silicone sealing mat for 384-Well PCR Plates. Designed to be especially suitable for thermal cyclers with pressure-fit lids. The non-reactive rubber will withstand repeated autoclaving, extreme temperatures and aggressive chemicals.

For best results we recommend using only the dedicated mat for your plate. The recommended sealing plate is listed in the ordering table under each plate.

NOTE: Sealing mats are not suitable for Realtime-PCR (qPCR) applications.