



200 µl graduated TipOne® Filter Tip, Natural (sterile), Racks



Product Highlights

- Graduated at 50 µl, 100 µl and 200 µl
- Highly effective HDPE filter that contains no additive to interfere with your samples
- Universal fit. One tip fits all! The tip collar is engineered to fit all popular pipettes
- Highly polished moulds for an extremely smooth surface to reduce sample retention
- Highest quality product. Tips manufactured from pure, virgin polypropylene to ensure the highest quality product
- Certified RNase, DNase, DNA and Pyrogen free

Product Applications

DNA applications (e.g. PCR)

RNA applications (e.g. Gene expression analysis)

Protein applications (e.g. Antibody Research)

Cell Culture applications (e.g. Media)

Applications with radio actives

STARLAB reserves the right to make changes at any time and without prior notice. The content and design of this PDF are protected by national and international copyright law and are the property of STARLAB International GmbH. Any duplication, editing, distribution and any kind of use and utilization of this PDF content in electronic systems, online media and / or libraries or similar databases requires the prior consent of STARLAB International GmbH.

Starlab International GmbH
Neuer Höltingbaum 38
22143 Hamburg
Email: info@starlab.de



General Data

Art. No.	S1120-8810
Color Code Wafer	Yellow
Material	Polypropylene
Pack Size	960 Tips (10 Racks × 96 Tips)
Autoclavable	No
Sterile	Yes
Graduations	Yes
Filter tip	Filter
Volume range	1.0 - 200 µl
Color	Natural
Volume	200 µl
For use with	<p>Abimed: BioPette-E, Discovery Comfort, LABMATE Optima</p> <p>Biohit: eLine, ePet, mLine, Picus, Proline</p> <p>BRAND: Transferpette, Transferpette Electronic, Transferpette S</p> <p>Capp: CappAero Comfort, CappAero Multi, CappAero Universal, Capptronic Multi, Capptronic Single, ecopipette, Singlechannel</p> <p>Eppendorf: Reference, Reference 2, Research, Research plus, Research pro, Xplorer</p> <p>Gilson: Pipetman Concept, Pipetman L, Pipetman Neo, Pipetman P, Pipetman Ultra</p> <p>Hamilton: SoftGrip Pipette, SofTouch</p> <p>HTL: Clinipet+, Discovery Comfort, Discovery Pro, Labmate Pro, Optipette</p> <p>Nichiryo: 00-NP7, 50F, 50V, NLE, NPLO, NPX</p> <p>Rainin: Classic, EDP1, EDP-3 Plus, Pipet-Lite, Pipet-Plus</p> <p>Sartorius: eLine, ePet, mLine, Picus, Picus NxT, Proline, Proline Plus, Tacta</p> <p>Socorex: Acura 815 manual, Acura 825, Acura 855, Acura electro 925, Acura electro 955, Calibra digital</p> <p>STARLAB: ErgoOne, ErgoOne E, MicroOne, StarPet, StarPet-E</p> <p>Thermo Fisher Scientific Inc.: Finn Focus Micro, Finn Focus Univ., Finnpipette Digital, Finnpipette Novus Turquoise</p>

STARLAB reserves the right to make changes at any time and without prior notice. The content and design of this PDF are protected by national and international copyright law and are the property of STARLAB International GmbH. Any duplication, editing, distribution and any kind of use and utilization of this PDF content in electronic systems, online media and / or libraries or similar databases requires the prior consent of STARLAB International GmbH.

Starlab International GmbH
Neuer Höltingbaum 38
22143 Hamburg
Email: info@starlab.de



More informations about 200 µl graduated TipOne® Filter Tip, Natural (sterile), Racks

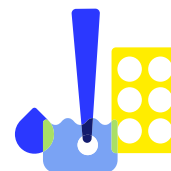
Nothing goes through!

Protect your samples against unwanted contamination by using TipOne® filter tips. The TipOne® filter is one of the best on the market and protects against aerosol cross-contamination without trapping your valuable samples. The filters contain no additives to interfere with samples.









During pipetting it is not possible to see with the eye if fine aerosols are going into your pipette. If they are, those aerosols can contaminate other samples at a later date.

TipOne® filter tips are proven to block >99% of aerosols and are among the best filters on the market. The results, shown right, speak for themselves!

**The comparative tests were conducted in an independent test institute with filter tips from other leading manufacturers.*



All Variations

PRODUCT NAME	PACKAGING SIZE	ART. NO.
 200 µl graduated TipOne® Filter Tip, Natural (sterile), Refills Pack Size: 960 Tips (10 Refills × 96 Tips)  Create PDF Data Sheet	960 Tips (10 Refills × 96 Tips)	S1120-8710
 200 µl graduated TipOne® Filter Tip, Natural (sterile), Refills, Case Pack Size: 7,680 Tips (80 Refills × 96 Tips)  Create PDF Data Sheet	7,680 Tips (80 Refills × 96 Tips)	S1120-8710-C
 200 µl graduated TipOne® Filter Tip, Natural (sterile), Racks Pack Size: 960 Tips (10 Racks × 96 Tips)  Create PDF Data Sheet	960 Tips (10 Racks × 96 Tips)	S1120-8810
 200 µl graduated TipOne® Filter Tip, Natural (sterile), Racks, Case Pack Size: 7,680 Tips (80 Racks × 96 Tips)  Create PDF Data Sheet	7,680 Tips (80 Racks × 96 Tips)	S1120-8810-C

STARLAB reserves the right to make changes at any time and without prior notice. The content and design of this PDF are protected by national and international copyright law and are the property of STARLAB International GmbH. Any duplication, editing, distribution and any kind of use and utilization of this PDF content in electronic systems, online media and / or libraries or similar databases requires the prior consent of STARLAB International GmbH.

Starlab International GmbH
Neuer Höltingbaum 38
22143 Hamburg
Email: info@starlab.de