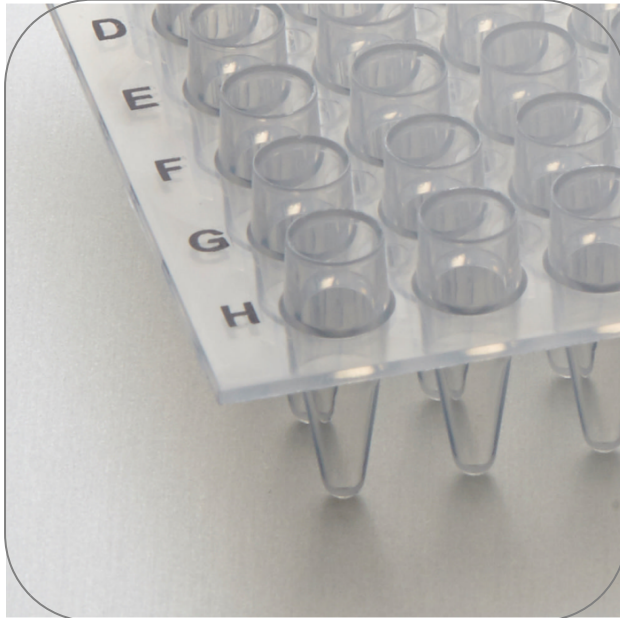




Non-Skirted PCR Plates with Elevated Wells



Product Highlights

- Non-skirted plates for a universal fit, suitable for most thermal cyclers
- Highly visible black printed matrix
- Certified Rnase, Dnase, DNA & Pyrogen-free
- Supplied in resealable bags

Product Applications

PCR

STARLAB reserves the right to make changes at any time and without prior notice. The content and design of this PDF are protected by national and international copyright law and are the property of STARLAB International GmbH. Any duplication, editing, distribution and any kind of use and utilization of this PDF content in electronic systems, online media and / or libraries or similar databases requires the prior consent of STARLAB International GmbH.

Starlab International GmbH
Neuer Höltingbaum 38
22143 Hamburg
Email: info@starlab.de



General Data

| | |
|-----------------------------------|----------------|
| Art. No. | See variations |
| Sterile | No |
| Autoclavable | Yes |
| Material | Polypropylene |
| DNA free | Yes |
| DNase free | Yes |
| Free of endotoxins | Yes |
| Human DNA free | Yes |
| PCR inhibitor free | Yes |
| Pyrogen free | Yes |
| RNase free | Yes |
| Color | Natural |
| Elevated wells | yes |
| Frame Design | Non-skirted |
| Suitable for PCR | yes |
| Suitable for Real-Time PCR (qPCR) | yes |

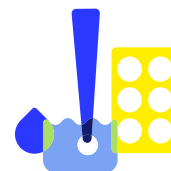
STARLAB reserves the right to make changes at any time and without prior notice. The content and design of this PDF are protected by national and international copyright law and are the property of STARLAB International GmbH. Any duplication, editing, distribution and any kind of use and utilization of this PDF content in electronic systems, online media and / or libraries or similar databases requires the prior consent of STARLAB International GmbH.

Starlab International GmbH
Neuer Höltingbaum 38
22143 Hamburg
Email: info@starlab.de



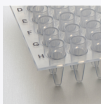

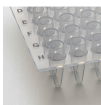

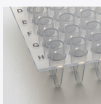



More informations about Non-Skirted PCR Plates with Elevated Wells

Starlab Non-Skirted PCR-Plates have no skirt at the plate edges. They have a universal fit for all common thermocyclers. The high elasticity of the plates ensures a proper fit in the heating block. Elevated Wells reduce the risk of contamination.



All Variations

| PRODUCT NAME | | PACKAGING SIZE | ART. NO. |
|---|---|-------------------------------|------------|
|  | 96-Well PCR Plate, Non-Skirted, Elevated Wells, Natural Profile: Elevated wells Number of wells: 96 wells  Create PDF Data Sheet | 10 Plates (1 Bag × 10 Plates) | E1403-2200 |
|  | 48-Well PCR Plate, Non-Skirted, Elevated Wells, Natural Profile: Elevated wells Number of wells: 48 wells  Create PDF Data Sheet | 20 Plates (1 Bag × 20 Plates) | E1403-3200 |
|  | 24-Well PCR Plate, Non-Skirted, Elevated Wells, Natural Profile: Elevated wells Number of wells: 24 wells  Create PDF Data Sheet | 40 Plates (1 Bag × 40 Plates) | E1403-4200 |
|  | Non-Skirted PCR Plates with Elevated Wells (Robbins® Style), Natural Profile: 3 mm elevated wells (Robbins® Style) Number of wells: 96 wells  Create PDF Data Sheet | 10 Plates (1 Bag × 10 Plates) | B1402-9200 |

STARLAB reserves the right to make changes at any time and without prior notice. The content and design of this PDF are protected by national and international copyright law and are the property of STARLAB International GmbH. Any duplication, editing, distribution and any kind of use and utilization of this PDF content in electronic systems, online media and / or libraries or similar databases requires the prior consent of STARLAB International GmbH.

Starlab International GmbH
Neuer Höltingbaum 38
22143 Hamburg
Email: info@starlab.de