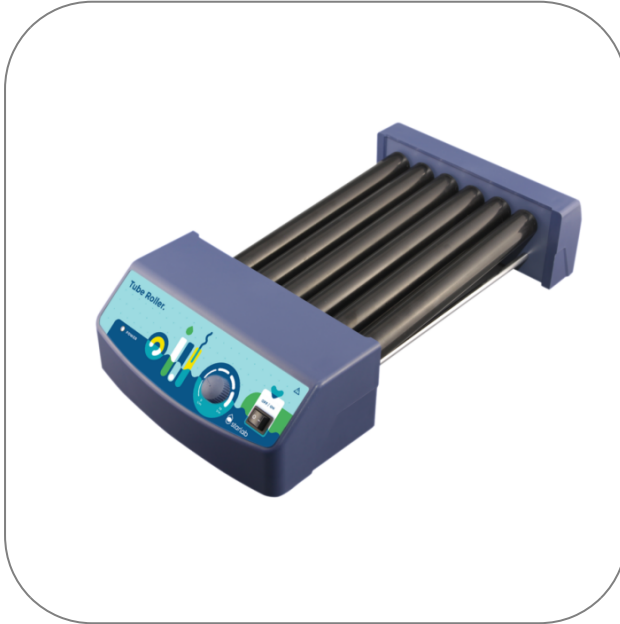




## Tube Roller



### Product Highlights

- Simultaneous rolling and tilting motion
- Continuous operation
- Speed control
- Six rollers to hold a load up to 4 kg
- Easy to use
- 2-year warranty

## Product Applications

Sample preparation

Ideal for mixing blood samples, viscous substances and liquid-solid suspensions

Resuspending cell pellets

Resuspending nucleic acid pellets

Resuspending chemical pellets

Hybridization experiments

Prevention of blood coagulation

Prevention of immune precipitation

STARLAB reserves the right to make changes at any time and without prior notice. The content and design of this PDF are protected by national and international copyright law and are the property of STARLAB International GmbH. Any duplication, editing, distribution and any kind of use and utilization of this PDF content in electronic systems, online media and / or libraries or similar databases requires the prior consent of STARLAB International GmbH.

**Starlab International GmbH**  
Neuer Höltigbaum 38  
22143 Hamburg  
Email: [info@starlab.de](mailto:info@starlab.de)



## General Data

Art. No.	N2400-7010
Dimensions (W × D × H)	260 mm × 460 mm × 120 mm
Dimensions (W × D)	260 mm × 460 mm
Weight	4.5 kg
Pack Size	1 Piece (1 Box × 1 Piece)
No. of rollers	6
Component Type	Orbital
Unit Material	Polyoxymethylene
Power supply	100 – 240 V, 50/60 Hz
Max. power consumption	25 W
Operating temperature	4 to 40 °C
Permissible Ambient Temperature	4 – 40 °C
Max. Load	4 kg
Max. RCF	70 rpm
Size of rollers	280 x 30 mm
Speed Range	0 – 70 rpm

STARLAB reserves the right to make changes at any time and without prior notice. The content and design of this PDF are protected by national and international copyright law and are the property of STARLAB International GmbH. Any duplication, editing, distribution and any kind of use and utilization of this PDF content in electronic systems, online media and / or libraries or similar databases requires the prior consent of STARLAB International GmbH.

**Starlab International GmbH**  
Neuer Höltigbaum 38  
22143 Hamburg  
Email: [info@starlab.de](mailto:info@starlab.de)



## More informations about Tube Roller

### Rock and roll!

Simultaneous rolling and tilting movements ensures thorough mixing. The tube roller is built for continuous operation and is suitable for applications such as hybridisation. The unit offers variable speed control and features a sturdy and robust construction.

STARLAB reserves the right to make changes at any time and without prior notice. The content and design of this PDF are protected by national and international copyright law and are the property of STARLAB International GmbH. Any duplication, editing, distribution and any kind of use and utilization of this PDF content in electronic systems, online media and / or libraries or similar databases requires the prior consent of STARLAB International GmbH.

**Starlab International GmbH**  
Neuer Höltigbaum 38  
22143 Hamburg  
Email: [info@starlab.de](mailto:info@starlab.de)