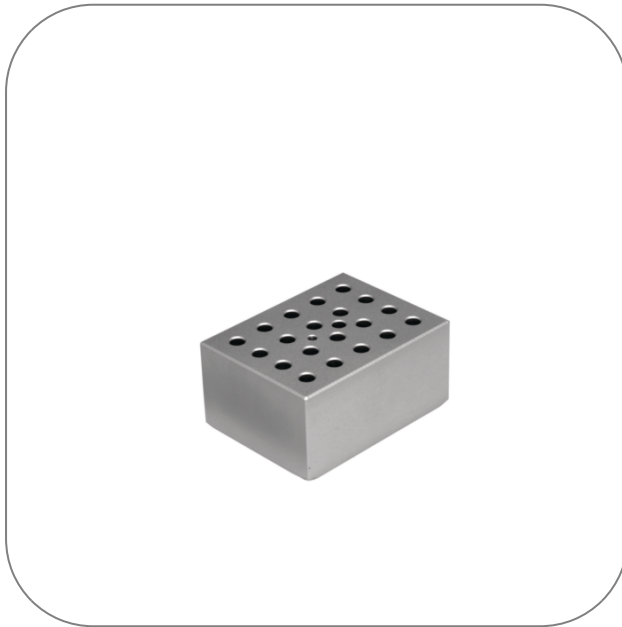




## Metal Block for 20 x 0.5 ml Tubes



### Product Highlights

- Well diameter: 7.9 mm
- Well depth: 25mm
- For use with N2400-4001 and N2400-4002
- Supplied with screw in handle for insertion/removal

## Product Applications

STARLAB reserves the right to make changes at any time and without prior notice. The content and design of this PDF are protected by national and international copyright law and are the property of STARLAB International GmbH. Any duplication, editing, distribution and any kind of use and utilization of this PDF content in electronic systems, online media and / or libraries or similar databases requires the prior consent of STARLAB International GmbH.

**Starlab International GmbH**  
Neuer Höltigbaum 38  
22143 Hamburg  
Email: [info@starlab.de](mailto:info@starlab.de)



## General Data

Art. No.	N2400-4105
Dimensions (W × D × H)	80 mm × 105 mm × 50 mm
Dimensions (W × D)	80 mm × 105 mm
Well diameter	7.90 mm
Well depth	25.00 mm
Pack Size	1 Piece (1 Box × 1 Piece)
System	Dry Bath Incubator (Single & Dual)
For use with (SL)	20 x 0.5 ml tubes

STARLAB reserves the right to make changes at any time and without prior notice. The content and design of this PDF are protected by national and international copyright law and are the property of STARLAB International GmbH. Any duplication, editing, distribution and any kind of use and utilization of this PDF content in electronic systems, online media and / or libraries or similar databases requires the prior consent of STARLAB International GmbH.

**Starlab International GmbH**  
Neuer Höltigbaum 38  
22143 Hamburg  
Email: [info@starlab.de](mailto:info@starlab.de)



## More informations about Metal Block for 20 x 0.5 ml Tubes

Metal block for use with the single block (N2400-4001) or dual block (N2400-4002) Dry Bath Systems.

The single & dual block dry bath is designed for a wide variety of applications. Additional function of a water bath.

Available as single or dual block units, these systems offer great value and convenience for the user. A range of **metal blocks** are available below.